

Cytoskeletal crosstalk: when three different personalities team up

Florian Huber, Adeline Boire, Magdalena Preciado López, Gijsje H. Koenderink*

FOM Institute AMOLF, 1098XG Amsterdam, The Netherlands

*Corresponding author. E-mail: g.koenderink@amolf.nl

Abstract

Cell shape and mechanics are determined by the interplay of three distinct cytoskeletal networks, made of actin filaments, microtubules, and intermediate filaments. These three types of cytoskeletal polymers have rather different structural and physical properties, enabling specific cellular functions. However, there is growing evidence that the three cytoskeletal subsystems also exhibit strongly coupled functions necessary for polarization, cell migration, and mechano-responsiveness. Here we summarize this evidence from a biophysical point of view, focusing on physical (direct) interactions between the cytoskeletal elements and their influence on cell mechanics and cell migration.

Introduction

Animal cells undergo substantial changes in shape as they grow, divide, and move. Yet, they also have an extraordinary ability to maintain their characteristic shape upon exposure to mechanical forces. Understanding how cells can combine dynamic shape control with mechanical stability is a shared goal of cell biologists and biophysicists. The principal molecular machinery responsible for cell shape and mechanics is the cytoskeleton. Given its enormous molecular complexity, it is common to study it in terms of distinct functional subsystems: actin filaments (AFs), microtubules (MTs), and intermediate filaments (IFs). There has been extensive experimental and theoretical work to understand the mechanisms that regulate the turnover dynamics and spatial organization of each subsystem in cells. AFs and MTs are both polar filaments, which exhibit fast out-of-equilibrium polymerization dynamics, and network-wide turnover rates on the order of minutes. In contrast, IFs have no structural polarity, polymerize in the minute time-scale, and have network-wide remodeling rates in the time-scale of hours. As powerful as the division into cytoskeleton subsystems has been in the past, it partly obstructed the view of the cytoskeleton as a highly intertwined entity. The last decade has brought growing evidence for strong coupling between all three cytoskeletal subsystems during key cellular functions ranging from cell motility and division to mechano-responsiveness (1-3). In this review we summarize these findings from a biophysical point of view, focusing on physical (direct) interactions between the cytoskeletal elements and their implications for the mechanical properties and migratory behavior of animal cells. Since the human IF family encompasses more than 65 different members, with cell- and tissue-specific functions, and given that we wish to focus on general physical concepts applicable to different cellular settings, we mainly consider the two most ubiquitous IFs: vimentin and keratin.

Evidence for three-way cytoskeletal crosstalk

There is a wealth of evidence that the three cytoskeletal subsystems interact indirectly via biochemical signaling (2, 4, 5) and gene regulation (6, 7). In addition, they also interact through direct physical contact, mediated by direct binding, cross-linkers, or through steric effects (as summarized in Fig. 1). *In vivo* and *in vitro* studies have highlighted direct binding between filamentous actin and vimentin (8) and between dephosphorylated neurofilaments and MTs (9). More established is a variety of cross-linking protein complexes which include both active (*i.e.* AF- and MT-based motor proteins) and passive components (*i.e.* plectins, members of the plakin family, (10)). There are also interconnections mediated by protein complexes situated at cell-matrix and cell-cell junctions and at the nuclear envelope (11, 12). Finally, the three cytoskeletal subsystems can also interact through nonspecific steric interactions. A recent study of mouse fibroblasts on micropatterns (13) for instance clearly showed how MTs interpenetrate a dense network of AFs near the cell periphery, and a dense network of vimentin in the cytoplasm (Fig. 2 a-c). Steric interactions, while often ignored, can contribute importantly to cell mechanics and shape control by influencing the mobility of cytoskeletal filaments (14) and by synergistically reinforcing the cytoskeleton, as reviewed below.

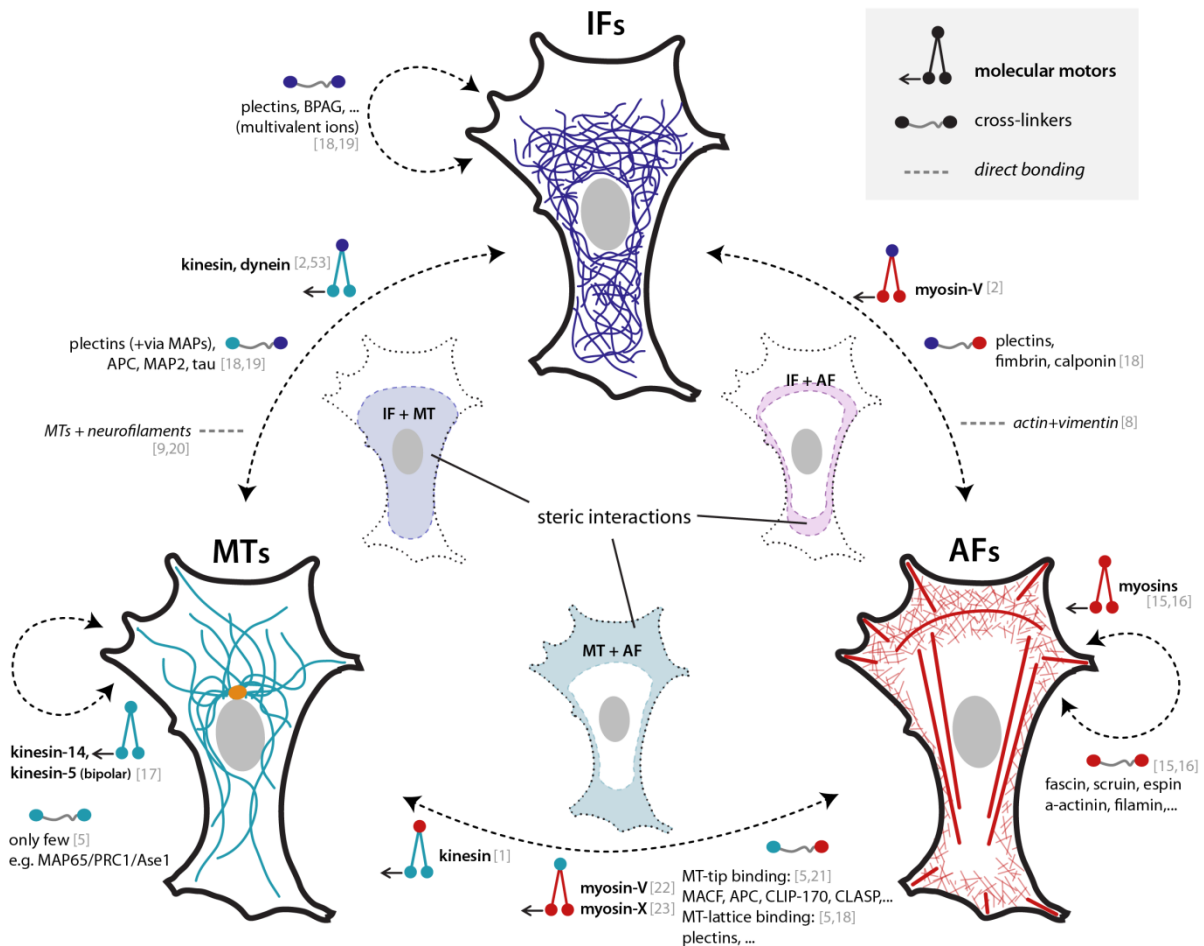


Figure 1 Multiple physical interactions exist within and in between the three cytoskeletal subsystems: intermediate filaments (IFs), microtubules (MTs) and actin filaments (AFs). In regions of spatial overlap (center), the subsystems interact via steric effects between IFs and MTs (mainly in the cell interior), MTs and AFs (mainly in the cell periphery), and IFs and AFs (mainly at the periphery of the IF network). For each individual cytoskeleton subsystem, there are cross-linkers and motors for AFs (15, 16) and for MTs (5, 17), while IFs are only connected by cross-linkers (18, 19). Crosstalk between AFs and IFs is facilitated by cross-linkers and motors (2, 18) and also by direct binding in the case of vimentin (8). Crosstalk between MTs and IFs is also mediated by cross-linkers and motors (2, 5), and direct binding in the case of neurofilaments (NFs) (9, 20). Crosstalk between AFs and MTs is mediated by numerous cross-linkers (1, 5, 21) as well as AF-based (1, 22, 23) and MT-based motors (1).

Role of cytoskeletal crosstalk in cell mechanics

A plethora of biophysical techniques is now available to probe the mechanical properties of single cells, usually by inducing local or whole-cell deformations through contact-based, hydrodynamic, magnetic, or optical forces (15, 24). Cells show large variations in mechanical properties (25) depending on intrinsic factors such as cell type and cycle, and on external factors such as substrate stiffness. It is still an unresolved question how the three cytoskeletal elements contribute individually to the mechanical behavior of cells. Usually, cells are perturbed with drugs or genetic methods to manipulate one of the cytoskeletal subsystems. However, this often leads to secondary changes in the other two subsystems, such as keratin gene up-regulation following actin depolymerization (7).

AFs and IFs are generally considered the main determinants of cell stiffness and strength (26-28). Their relative contributions seem to depend on external cues such as substrate stiffness (28) and applied mechanical stress (29). Local mechanical probing has shown that vimentin contributes mainly to cytoplasmic stiffness, whereas actin dominates cortical stiffness (30). Since the complex interlacing of the three cytoskeletal subsystems often hampers an unambiguous conclusion, quantitative rheological measurements on *in vitro* reconstituted networks have become a popular complementary approach (24, 25). Such *in vitro* studies have led to detailed predictive models of the mechanical properties of one-component cytoskeletal networks in terms of network architecture and the intrinsic mechanical properties of the filaments and cross-linking proteins (29). The three cytoskeletal subsystems differ markedly in their mechanical behavior (Fig. 2). At the single filament level, IFs are the softest, with a persistence length (roughly a measure of the distance over which a filament is straight) in the 1 μm range (24). AFs have an intermediate persistence length of about 10 μm , and MTs are the stiffest, with a persistence length on the order of several millimeters (15, 24). Furthermore, IFs can be stretched by up to 3 times their original length (19), whereas AFs and MTs tend to break at strains of less than 50% (31). These differences at the single filament level cause marked differences in stiffness and strength at the whole-network level (Fig. 2d). Concomitantly, IF networks tend to be softer than MT and actin networks at low strain, but they can withstand much larger deformations (31). Thus, IFs are generally believed to dominate the mechanical response of cells at large deformations, which is supported by recent coarse-grained simulations (32).

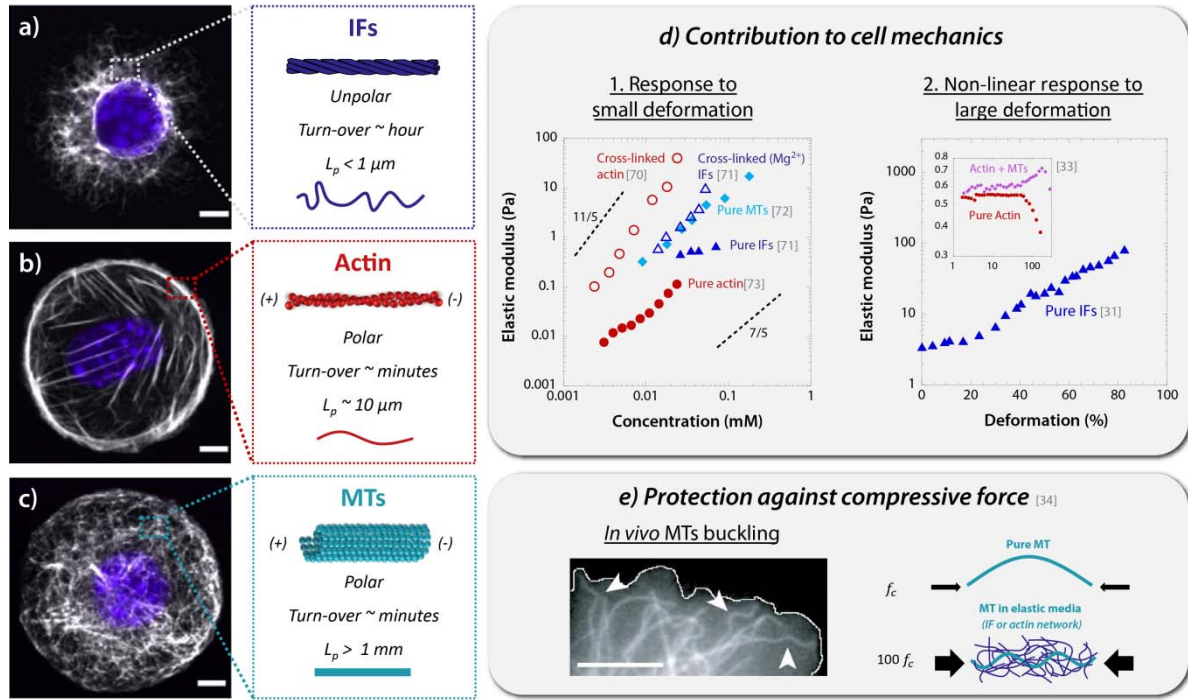


Figure 2 Contribution of the cytoskeleton to the mechanical properties of cells, highlighted by *in vitro* studies. IFs, AF and MTs markedly differ in their polarity, turn-over dynamics and persistence length (a, b, c from [13]). Cytoskeletal networks display a wide range of elastic moduli at small deformations (d), spanning about five orders of magnitude, depending on their concentration and on the extent of cross-linking. Data were taken from [31, 33, 70-73]. The elastic modulus increases as a power law with concentration with exponents of 7/5 for entangled networks and 11/5 for cross-linked networks (dashed lines). A particularity of IFs network is their non-linear response to large strain (d) [31]. MTs promote strain-stiffening of actin networks by suppressing inhomogeneous AF deformations (d, inset) [33]. Actin and IF networks provide an elastic background network that reinforce MTs against compressive forces (e) [34].

Recent studies have revealed that the composite nature of the cytoskeleton promotes surprising emergent mechanical behavior that cannot be expected simply by a sum of the parts. For instance, the elastic filamentous background provided by AFs and IFs stabilizes MTs against buckling. In cells, MTs usually display multiple short-wavelength bends (Fig. 2e) and can withstand compressive forces that are more than a 100-fold larger than the critical buckling force of an isolated microtubule [34]. Theoretical modeling revealed that this reinforcement is a generic consequence of embedding stiff MTs in an elastic medium comprised of more flexible filaments [35]. Conversely, MTs were found to promote stiffening of actin networks (inset in Fig. 2d) under an applied mechanical shear [33]. At low cross-linker density, actin networks tend to deform inhomogeneously by non-affine deformation modes that are sensitive to the local architecture of the network. Computational modeling has shown that inclusion of stiff MTs can suppress these soft modes and thereby favor strain-stiffening [36]. Simulations and experiments have further shown that the inclusion of stiff MTs in an otherwise incompressible actin matrix can make the network compressible as a whole [37, 38]. Thus, the interpenetration and steric interactions among different cytoskeletal networks combined with specific cross-linking (*i.e.* by plectins) are likely to strongly influence the overall mechanical response of cells [39]. It may be fruitful to compare observations from *in vitro* experiments and single cell rheological measurements with findings from materials science, which already widely exploits the synergistic interplay that emerges from combining polymers with disparate stiffness to design stronger materials [40].

Role of cytoskeletal crosstalk in cell shape control

Three-way cytoskeletal crosstalk also plays an important role in orchestrating cellular shape changes. A prominent example is cell migration, which is realized through a series of cytoskeletal remodeling processes which depend on cell type and extra-cellular environment (41). Here, we focus on crawling (or mesenchymal) cell migration on flat substrates, since cytoskeletal crosstalk has been studied most extensively in this context.

Functional modules for cell migration

From a functional perspective, cell crawling can be dissected into three largely autonomous modules (Fig. 3A). The first module, responsible for force generation, comprises a protrusive element that induces expansion and a contractile element that counteracts it. With few known exceptions (5, 15), the acto-myosin cytoskeleton serves as the major protrusive and contractile element. Protrusion is driven by a dense actin meshwork in the lamellipodium which is interspersed with parallel bundles of AFs in filopodia (16, 42). AF nucleation and polymerization at the cell edge drive actin network expansion, which is followed by delayed network disassembly at the lamellum, and consequent directed flow of actin structures away from the leading edge. Contraction is driven by myosin motors that exert pulling forces on AFs organized in anti-parallel bundles in the lamellum (16), as well as in stress-fibers which span the length of the cell. The second functional module required for cell crawling is comprised of cell-to-matrix adhesions, which transmit cell-generated forces to the substrate. The third functional module is a mechanical element, *i.e.* the entire cytoskeleton as a compound material, which ensures mechanical integration between the force-generating and adhesion modules. While the functional modules contain the ability to drive cell migration, controlled and directed motion requires their tight coordination. Perturbations of any of the three functional elements can be deleterious for proper migration. For instance, weakening the central mechanical element by removing keratins (26) or reducing contractile activity by impairing myosin motor activity (43) can lead to unbalanced motion of the front and rear of the cell, resulting in cell fragmentation (Fig. 3B).

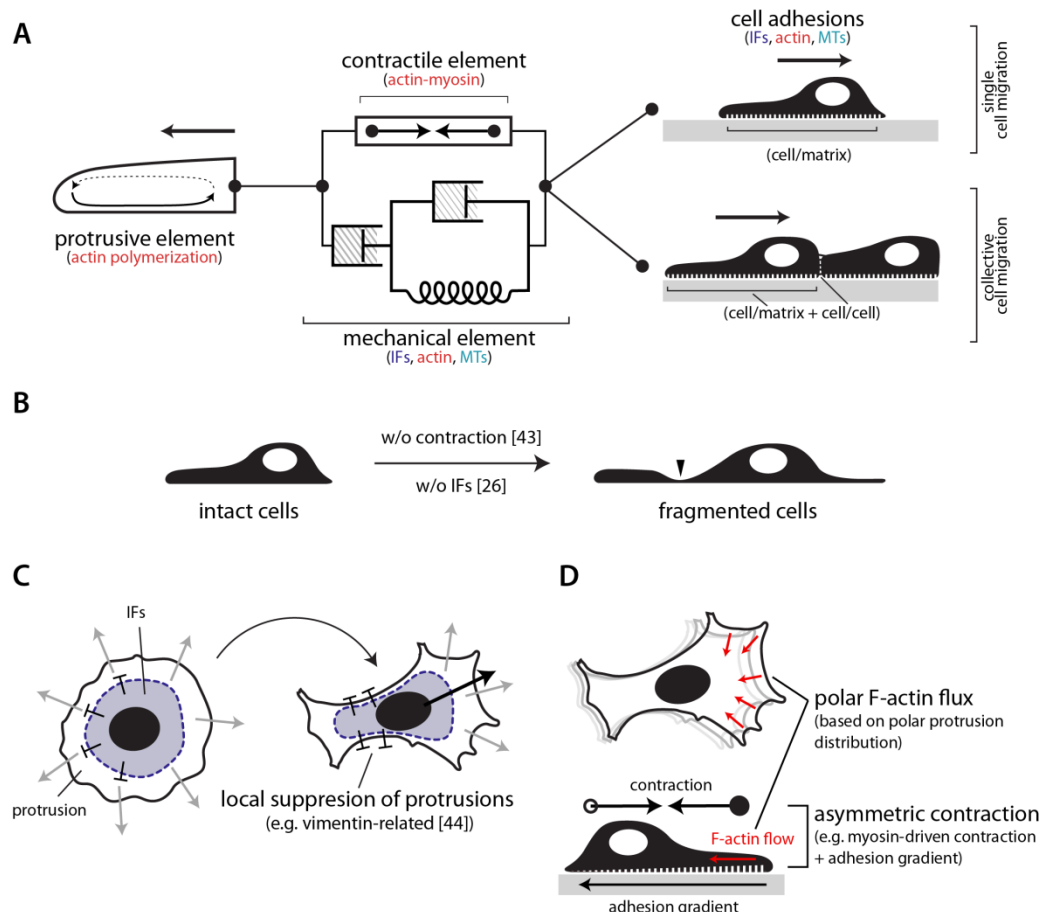


Figure 3 Crawling cell migration requires close coordination between three distinct functional modules. (A) Forward forces are generated by protrusive elements (lamellipodium/lamellum, filopodia), which are opposed by contractile elements (actin-myosin assemblies such as stress fibers). Movement is generated by transmitting forces to the substrate via cell adhesions that interact with all three cytoskeletal subsystems. A visco-elastic mechanical module (represented in terms of springs and dashpots in A), provides physical coupling between the other two modules. (B) Perturbations of one module can cause cell fragmentation (26, 43). (C) Net cell movement requires a polarized organization of the cytoskeleton. One way to break symmetry is by suppressing actin-based protrusions via an as yet unknown pathway involving vimentin (44). Once polarized, the asymmetrical distribution of protrusions produces a polar AF flux and thereby a net force (D). Acto-myosin driven contraction along the polar axis can also result in overall movement if combined with a gradient in adhesion strength.

From autonomous functional modules to cell movement via cytoskeletal crosstalk

Coordination between the three functional modules involved in cell crawling requires that cells integrate the functions of all three cytoskeletal subsystems. This, however, makes it difficult to dissect their individual contributions. In the context of cell migration, the actin cytoskeleton has been the most extensively studied cytoskeletal component (15, 16). However, there is increasing appreciation of the crucial contributions of MTs (1, 5) and IFs (3) to cell migration based on a growing list of observations on cytoskeletal interactions (Fig. 4). We note, though, that the precise behaviors that stem from such instances of cytoskeletal crosstalk are generally not yet understood on a mechanistic level.

The most fundamental requirement for net cell motion is a polarized organization of the cytoskeleton (Fig. 3C). Until recently, polarity establishment was mostly ascribed to the actin and MT cytoskeleton and their interactions with cell-to-matrix adhesions and with the nucleus. There is, however, growing evidence that IFs are also decisively involved in cell motion (44, 45) and mechano-sensing (46). Figure 4 summarizes some of the main cytoskeletal crosstalk instances in the cell polarization pathway, including those in which vimentin has been implicated. The first important instance controls the selective disassembly of cell-to-matrix adhesion sites. It is well-known that

adhesion formation and maturation are tightly coupled to the dynamics of the actin network at the leading edge of cells and to stress-fiber contractility (42, 47). Focal adhesions promote stress-fiber maturation (47, 48), which in turn promotes focal adhesion maturation via contractile forces. There is evidence that the polarized adhesion disassembly critically relies on crosstalk between AFs and MTs (5, 49). *In vivo* and *in vitro* work has demonstrated that actin stress fibers serve as guiding tracks for growing MTs, which can thus target adhesion sites with their growing ends (49, 50), an essential step in triggering focal adhesion disassembly. Several IFs have now also been shown to interact with cell-matrix adhesions. In the case of vimentin, this interaction is mediated by plectin (51). Interestingly, this interaction leads to a reciprocal crosstalk where vimentin causes strengthening of the adhesion sites (51-53), while the adhesions serve as sites of *de novo* vimentin network formation via as yet unknown pathways (51). Finally, vimentin also influences the selective disassembly of cell-to-matrix adhesions by mediating the recycling of integrins, together with filamin (54).

A second important instance of cytoskeletal crosstalk controls the maintenance of a polarized cell shape. Recent work shows that vimentin can have a pro-migratory function through interactions with actin networks at the cell periphery. The strong observed correlation between lamellipodia formation and vimentin network disassembly (44) suggests that vimentin locally suppresses the formation of actin-based lamellipodia, leading to an asymmetrical distribution of protrusions and thereby a net force (Fig. 3C-D). Furthermore, it has been shown that upon vimentin removal, motile cells adopt epithelial-like shapes (44, 45), an effect that can be reversed by vimentin micro-injection. Vimentin network assembly (45, 55) and spatial organization (53, 56) are also tightly coupled to the MT cytoskeleton, for instance through transport by kinesin motors (55) or regulated polymerization along MTs controlled by MT plus-end trackers (56). Conversely, a recent study on micro-patterned cells showed that the polar organization of MTs in turn relies partly on the presence of vimentin (Fig. 4)(13). Given that the MT cytoskeleton plays a crucial role in cell polarity through its control on focal adhesion turnover and nuclear positioning (5), this further implicates vimentin in cell polarity establishment and maintenance. Finally, single-molecule tracking of vimentin subunits along the MT cytoskeleton showed that the actin cytoskeleton can restrict IF transport (55), pointing to a complex three-way cytoskeletal crosstalk.

Unlike vimentin, keratin is usually associated with inhibition of cell migration since its expression is generally associated with epithelial-to mesenchymal transitions (3). Different from vimentin, keratin organization seems to depend mostly on interactions with AFs (3, 45). Cell-to-matrix adhesions for instance contribute to keratin nucleation (57, 58). However, recent observations suggest that keratin-MT crosstalk also occurs, by destabilization of MTs via an unresolved mechanism that involves plectin (59).

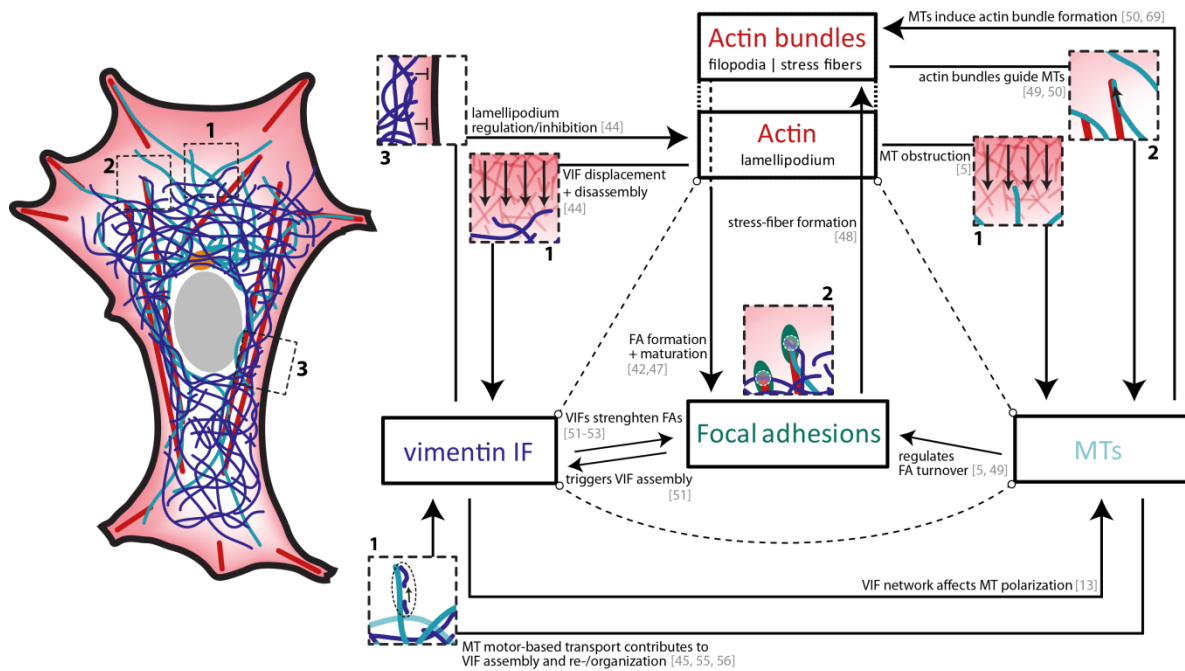


Figure 4 On the left, a sketch of the three cytoskeletal networks in an adherent cell crawling on a flat substrate. The three boxed regions (labeled 1, 2, 3 on the left panel) illustrate areas of intense cytoskeletal crosstalk. On the right, an overview of experimentally observed interactions between IFs (shown here: vimentin), MTs, and AFs, which take place within the lamellipodium (Box 1), at cell-matrix adhesion sites (Box 2), and in the more interior cytoplasm (Box 3). While some of the drawn interactions are known to be linked to specific molecular mediators (e.g. MT guidance along actin bundles by spectraplakins such as MACF (50)), others remain mostly descriptive. We also expect the number of relevant interactions to increase fast with future *in vivo* observations.

How cytoskeleton crosstalk contributes to 3D cell motility strategies, such as bleb-based motion in tissues (60) or cancer cell invasion remains largely unknown. Interestingly, both vimentin and microtubules were recently shown to be necessary for elongation of the actin-based invadopodia of metastatic cancer cells (30). Likewise, it remains poorly understood how cytoskeletal crosstalk contributes to collective cell migration during tissue morphogenesis in developing embryos and in wound healing of epithelial tissues (12, 61). IFs seem to play a key role in the response of cell-cell junctions to inter-cellular tension and in maintaining the cell sheet's integrity. Pulling on cadherins of *Xenopus laevis* embryo cells by magnetic tweezers was recently observed to trigger recruitment of keratin, which was shown to be required for persistent migration (12). Wound healing assays using different cell types further showed faster wound closure upon keratin down-regulation (62) or knockout (63). Depending on cell type, this was accompanied by a loss of cell-cell contacts (62). This phenomenon probably contributes to keratin's reported involvement in decreasing cell invasiveness (26). Vimentin crosstalk with integrin-based focal adhesions was shown to be involved in migration of repair cells at the leading edge of wounded lens epithelia, contributing essentially to wound closure (64).

Future directions

It is now clear that reciprocal regulation and physical interactions between all three cytoskeletal subsystems (AFs, MTs, and IFs) are essential to ensure both the mechanical stability and dynamic shape changes of cells. Indeed, many of the basic components are highly conserved and hence co-evolved over long periods of time (65). The different cytoskeletal systems strongly differ at the single-filament level, in terms of structure and dynamics, as well as at the network level, in terms of architecture and mechanics. Cytoskeletal crosstalk provides a powerful strategy to combine those

disparate properties without having to reinvent entirely new materials for each task. A variety of interactions involving structural links based on cross-linkers and motor proteins, as well as regulatory pathways, makes diverse mechanical and functional settings feasible. Future cell and developmental biology studies will have to decipher the key molecular elements that mediate this inter-cytoskeletal regulation in different tissue contexts. An important technical challenge remains to simultaneously image all three cytoskeletal subsystems in live cells and model organisms with comparative levels of spatio-temporal accuracy. We expect that advances in fluorescent labeling, super-resolution fluorescence microscopy, and electron microscopy will greatly accelerate this research. In addition, a precise dissection of the molecular mechanisms of cytoskeletal crosstalk will also require complementary *in vitro* experiments. Advanced methods in microfabrication such as high-resolution surface patterning (13, 66, 67) and confinement in microfluidic devices (68) are likely to play an important role in bridging the gap between *in vivo* and *in vitro* observations by offering the possibility to 'standardize' live cell experiments.

Acknowledgment

We thank Bela Mulder for comments on the manuscript. This work was made possible by the Stichting voor Fundamenteel Onderzoek der Materie (FOM), which is financially supported by the Nederlandse Organisatie voor Wetenschappelijk Onderzoek (NWO). FH was further supported by a Marie Curie IEF fellowship.

References and recommended reading

1. Rodriguez OC, Schaefer AW, Mandato CA, Forscher P, Bement, WM and Waterman-Storer, CM: **Conserved microtubule-actin interactions in cell movement and morphogenesis.** *Nat Cell Biol* 2003, **5**:599-609.
2. Chang L, Goldman RD: **Intermediate filaments mediate cytoskeletal crosstalk.** *Nat Rev Mol Cell Biol* 2004, **5**:601-613.
3. Chung BM, Rotty JD, Coulombe PA: **Networking galore: intermediate filaments and cell migration.** *Curr Opin Cell Biol* 2013, **25**(5):600-612.
4. Murray M, Mendez M, Janmey P: **Substrate stiffness regulates solubility of cellular vimentin.** *Mol Biol Cell* 2014, **25**:87-94.
5. Etienne-Manneville S: **Microtubules in Cell Migration.** *Annu Rev Cell Dev Biol* 2013, **29**:471-499.
6. Swift, J, Ivanovska, IL, Buxboim, A, Harada, T, Dingal, PC, Pinter, J, Pajerowski, JD, Spinler, KR, Shin, JW, Tewari, M, Rehfeldt, F, Speicher, DW, Discher, DE: **Nuclear lamin-A scales with tissue stiffness and enhances matrix-directed differentiation.** *Science* 2013, **341**:1240104.
7. Chang TH, Huang HD, Ong WK, Fu YJ, Lee OK, Chien S, Ho JH: **The effects of actin cytoskeleton perturbation on keratin intermediate filament formation in mesenchymal stem/stromal cells.** *Biomaterials* 2014, **35**:3934-3944.
8. Esue O, Carson AA, Tseng Y, Wirtz D: **A direct interaction between actin and vimentin filaments mediated by the tail domain of vimentin.** *J Biol Chem* 2006 **281**:30393-30399.

9. Hisanaga S, Hirokawa N: **Dephosphorylation-induced interactions of neurofilaments with microtubules.** *J Biol Chem* 1990, **265**:21852-21858.
10. Jefferson JJ, Leung CL, Liem RKH: **Plakins: Goliaths that link cell junctions and the cytoskeleton.** *Nat Rev Mol Cell Biol* 2004, **5**:542-553.
11. Lombardi ML, Jaalouk DE, Shanahan CM, Burke B, Roux KJ, Lammerding J: **The interaction between nesprins and sun proteins at the nuclear envelope is critical for force transmission between the nucleus and cytoskeleton.** *J Biol Chem* 2011, **286**:26743-26753.
12. Weber GF, Bjerke MA, DeSimone DW: **A Mechanoresponsive Cadherin-Keratin Complex Directs Polarized Protrusive Behavior and Collective Cell Migration.** *Dev Cell* 2012, **22**:104-115.
13. Shabbir SH, Cleland MM, Goldman RD, Mrksich M: **Geometric control of vimentin intermediate filaments.** *Biomaterials* 2014, **35**:1359-1366.
14. Brangwynne CP, Koenderink GH, MacKintosh FC, Weitz DA: **Nonequilibrium microtubule fluctuations in a model cytoskeleton.** *PRL* 2008, **100**: 118104.
15. Huber F, Schnauß J, Röncke S, Rauch P, Müller K, Fütterer C, Käs J: **Emergent complexity of the cytoskeleton: from single filaments to tissue.** *Adv Phys* 2013, **62**:1-112.
16. Blanchoin L, Boujemaa-Paterski R, Sykes C, Plastino J: **Actin Dynamics, Architecture, and Mechanics in Cell Motility.** *Physiol Rev* 2014, **94**:235-263.
17. Cross RA, McAnish A: **Prime movers: the mechanochemistry of mitotic kinesins.** *Nat Rev Mol Cell Biol* 2014, **15**:257-271.
18. Coulombe PA, Bousquet O, Ma L, Yamada S, Wirtz D: **The 'ins' and 'outs' of intermediate filament organization.** *Trends Cell Biol* 2000, **10**:420-428.
19. Kreplak, L., Bär, H., Leterrier, J. F., Herrmann, H., Aebi, U: **Exploring the mechanical behavior of single intermediate filaments.** *J Mol Biol* 2005. **354**: 569–577.
20. Bocquet A, Berges R, Frank R, Robert P, Peterson AC, Eyer J: **Neurofilaments Bind Tubulin and Modulate Its Polymerization.** *J Neurosci* 2009. **29**:11043-11054.
21. Akhmanova A, Steinmetz MO: **Microtubule +TIPs at a glance.** *J Cell Sci* 2010, **123**:3415-3419.
22. Zimmermann D, Abdel Motaal B, Voith von Voithenberg L, Schliwa M, Ökten Z: **Diffusion of Myosin V on Microtubules: A Fine-Tuned Interaction for Which E-Hooks Are Dispensable.** *PLoS ONE* 2011, **6**:e25473.
23. McMichael BK, Cheney RE, Lee BS: **Myosin X Regulates Sealing Zone Patterning in Osteoclasts through Linkage of Podosomes and Microtubules.** *J Biol Chem* 2010 **285**:9506-9515.
24. Kasza KE, Rowat AC, Liu J, Angelini TE, Brangwynne CP, Koenderink GH, Weitz DA: **The cell as a material.** *Curr Opin Cell Biol* 2007, **19**:101-107.
25. Kollmannsberger P, Fabry B: **Linear and Nonlinear Rheology of Living Cells.** *Annu Rev Mater Res* 2010, **41**:110301100446097.
26. Seltmann K, Fritsch AW, Käs JA, Magin TM: **Keratins significantly contribute to cell stiffness and impact invasive behavior.** *PNAS* 2013, **110**: 18507-18512.

27. Ramms L, Fabris G, Windoffer R, Schwarz N, Springer R, Zhou C, Lazar J, Stiefel S, Hersch N, Schnakenberg U, Magin TM, Leube RE, Merkel R, Hoffmann B: **Keratins as the main component for the mechanical integrity of keratinocytes.** *PNAS* 2013, **110**:18513-18518.
28. Mendez MG, Restle D, Janmey PA: **Vimentin Enhances Cell Elastic Behavior and Protects against Compressive Stress.** *Biophys J* 2014 **107**:314-323.
29. Pritchard RH, Shery Huang YY, Terentjev EM: **Mechanics of biological networks: from the cell cytoskeleton to connective tissue.** *Soft Matter* 2014, **10**:1864-1884.
30. Guo M, Ehrlicher AJ, Mahammad S, Fabich H, Jensen MH, Moore JR, Fredberg JJ, Goldman RD, Weitz DA: **The Role of Vimentin Intermediate Filaments in Cortical and Cytoplasmic Mechanics.** *Biophys J* 2013, **105**:1562-1568.
31. Janmey PA, Euteneuer U, Traub P, Schliwa M: **Viscoelastic properties of vimentin compared with other filamentous biopolymer networks.** *J Cell Biol* 1991, **113**:155-160.
32. Bertaud J, Qin Z, Buehler MJ: **Intermediate filament-deficient cells are mechanically softer at large deformation: A multi-scale simulation study.** *Acta Biomaterialia* 2010, **6**:2457-2466.
33. Lin YC, Koenderink GH, MacKintosh FC, Weitz DA: **Control of non-linear elasticity in F-actin networks with microtubules.** *Soft Matter* 2011, **7**:902-906.
34. Brangwynne CP, MacKintosh FC, Kumar S, Geisse NA, Talbot J, Mahadevan L, Parker KK, Ingber DE, Weitz DA: **Microtubules can bear enhanced compressive loads in living cells because of lateral reinforcement.** *J Cell Biol* 2006, **173**:733-741.
35. Das M, Levine AJ, MacKintosh FC: **Buckling and force propagation along intracellular microtubules.** *EPL* 2008, **84**:18003.
36. Bai M, Missel AR, Klug WS, Levine AJ: **The mechanics and affine-nonaffine transition in polydisperse semiflexible networks.** *Soft Matter* 2011, **7**:907-914.
37. Pelletier V, Gal N, Fournier P, Kilfoil ML: **Microrheology of Microtubule Solutions and Actin-Microtubule Composite Networks.** *PRL* 2009, **102**: 188303.
38. Das M, MacKintosh FC: **Mechanics of soft composites of rods in elastic gels.** *PRE* 2011, **84**: 061906.
39. Na S, Chowdhury F, Tay B, Ouyang M, Gregor M, Wang Y, Wiche G, Wang N: **Plectin contributes to mechanical properties of living cells.** *American Journal of Physiology-Cell Physiology* 2009 **296**(4):C868-C877.
40. Sun JY, Zhao X, Illeperuma WRK, Chaudhuri O, Oh KH, Mooney DJ, Vlassak JJ, Suo Z: **Highly stretchable and tough hydrogels.** *Nature* 2012, **489**:133-136.
41. Friedl P, Wolf K: **Plasticity of cell migration: a multiscale tuning model.** *J Cell Biol* 2010, **188**:11-19.
42. Gardel ML, Schneider IC, Aratyn-Schaus Y, Waterman CM: **Mechanical Integration of Actin and Adhesion Dynamics in Cell Migration.** *Ann Rev Cell Dev Biol* 2010, **26**:315-333.
43. Verkhovsky AB, Svitkina TM, Borisy GG: **Self-polarization and directional motility of cytoplasm.** *Curr Biol* 1999, **9**:11-20.

44. Helfand BT, Mendez MG, Murthy SNP, Shumaker DK, Grin B, Mahammad S, Aebi U, Wedig T, Wu YI, Hahn KM, Inagaki M, Herrmann H, Goldman RD: **Vimentin organization modulates the formation of lamellipodia.** *Mol Biol Cell* 2011, **22**:1274-1289.
45. Mendez MG, Kojima SI, Goldman RD: **Vimentin induces changes in cell shape, motility, and adhesion during the epithelial to mesenchymal transition.** *FASEB J* 2010, **24**:1838-1851.
46. Gregor M, Osmanagic-Myers S, Burgstaller G, Wolfram M, Fischer I, Walko G, Resch GP, Jörgl A, Herrmann H, Wiche G: **Mechanosensing through focal adhesion-anchored intermediate filaments.** *FASEB J* 2014, **28**:715-729.
47. Oakes PW, Gardel ML: **Stressing the limits of focal adhesion mechanosensitivity.** *Curr Opin Cell Biol* 2014, **30**:68-73.
48. Tojkander S, Gateva G, Schevzov G, Hotulainen P, Naumanen P, Martin C, Gunning PW, Lappalainen P: **A Molecular Pathway for Myosin II Recruitment to Stress Fibers.** *Curr Biol* 2011, **21**:539-550.
49. Wu XY, Kodama A, Fuchs E: **ACF7 regulates cytoskeletal-focal adhesion dynamics and migration and has ATPase activity.** *Cell* 2008, **135**:137-148.
50. López MP, Huber F, Grigoriev I, Steinmetz MO, Akhmanova A, Koenderink GH, Dogterom M: **Actin-microtubule coordination at growing microtubule ends.** *Nat Commun* 2014, **5**:4778.
51. Burgstaller G, Gregor M, Winter L, Wiche G: **Keeping the vimentin network under control: cell-matrix adhesion-associated plectin 1f affects cell shape and polarity of fibroblasts.** *Mol Biol Cell* 2010, **21**:3362-3375.
52. Lynch C, Lazar A, Iskratsch T, Zhang X, Sheetz M: **Endoplasmic spreading requires coalescence of vimentin intermediate filaments at force-bearing adhesions.** *Mol Biol Cell* 2013, **24**:21-30.
53. Bhattacharya R, Gonzalez AM, DeBiase PJ, Trejo HE, Goldman RD, Flitney FW, Jones JCR: **Recruitment of vimentin to the cell surface by beta 3 integrin and plectin mediates adhesion strength.** *J Cell Sci* 2009, **122**:1390-1400.
54. Kim H, Nakamura F, Lee W, Hong C, Pérez-Sala D, McCulloch CA: **Regulation of cell adhesion to collagen via beta1 integrins is dependent on interactions of filamin A with vimentin and protein kinase C epsilon.** *Exp Cell Res* 2010, **316**:1829-1844.
55. Robert A, Herrmann H, Davidson MW, Gelfand VI: **Microtubule-dependent transport of vimentin filament precursors is regulated by actin and by the concerted action of Rho- and p21-activated kinases.** *FASEB J* 2014, **28**:2879-2890.
56. Sakamoto Y, Boëda B, Etienne-Manneville S: **APC binds intermediate filaments and is required for their reorganization during cell migration.** *J Cell Biol* 2013, **200**:249-258.
57. Felkl M, Tomas K, Smid M, Mattes J, Windoffer R, Leube, RE: **Monitoring the Cytoskeletal EGF Response in Live Gastric Carcinoma Cells.** *PLoS ONE* 2012, **7**:e45280.
58. Windoffer R, Beil M, Magin TM, Leube: **RE Cytoskeleton in motion: the dynamics of keratin intermediate filaments in epithelia.** *J Cell Biol* 2011, **194**:669-678.

59. Valencia RG, Walko G, Janda L, Novacek J, Mihailovska E, Reipert S, Andrä-Marobela K, Wiche G: **Intermediate filament-associated cytolinker plectin 1c destabilizes microtubules in keratinocytes.** *Mol Biol Cell* 2013, **24**:768-784.
60. Charras G, Paluch E: **Blebs lead the way: how to migrate without lamellipodia.** *Nat Rev Mol Cell Biol* 2008, **9**:730-736.
61. Tambe DT, Corey Hardin C, Angelini TE, Rajendran K, Park CY, Serra-Picamal X, Zhou EH, Zaman MH, Butler JP, Weitz DA, Fredberg JJ, Trepats X: **Collective cell guidance by cooperative intercellular forces.** *Nat Mater* 2011, **10**:469-475.
62. Long HA, Boczonadi V, McInroy L, Goldberg M, & Määttä A: **Periplakin-dependent re-organisation of keratin cytoskeleton and loss of collective migration in keratin-8-downregulated epithelial sheets.** *Journal of Cell Science* 2006, **119**(24):5147-5159.
63. Seltsmann K, Roth W, Kroger C, Loschke F, Lederer M, Huttelmaier S, Magin TM: **Keratins Mediate Localization of Hemidesmosomes and Repress Cell Motility.** *J Invest Dermatol* 2013, **133**:181-190.
64. Menko AS, Bleaken BM, Libowitz AA, Zhang L, Stepp MA, Walker JL: **A central role for vimentin in regulating repair function during healing of the lens epithelium.** *Mol Biol Cell* 2014, **25**:776-790.
65. Wickstead B, Gull K: **The evolution of the cytoskeleton.** *J Cell Biol* 2011, **194**:513-525.
66. Vignaud T, Blanchoin L, Théry M: **Directed cytoskeleton self-organization.** *Trends Cell Biol* 2012, **22**:671-682.
67. Dupin I, Sakamoto Y, Etienne-Manneville S: **Cytoplasmic intermediate filaments mediate actin-driven positioning of the nucleus.** *J Cell Sci* 2011, **124**:865-872.
68. Rodríguez-Fraticelli AE, Auzan M, Alonso MA, Bornens M, Martín-Belmonte F: **Cell confinement controls centrosome positioning and lumen initiation during epithelial morphogenesis.** *J Cell Biol* 2012, **198**:1011-1023.
69. Jiang K, Toedt G, Montenegro Gouveia S, Davey NE, Hua S, van der Vaart B, Grigoriev I, Larsen J, Pedersen LB, Bezstarosti K, Lince-Faria M, Demmers J, Steinmetz MO, Gibson TJ, Akhmanova A: **A Proteome-wide Screen for Mammalian SxIP Motif-Containing Microtubule Plus-End Tracking Proteins.** *Curr Biol* 2012, **22**:1800-1807.
70. Gardel ML, Shin JH, MacKintosh FC, Mahadevan L, Matsudaira P, Weitz DA: **Elastic Behavior of cross-linked and bundled actin networks.** *Science* 2004, **304**:1301-1305.
71. Lin YC, Broedersz CP, Rowat AC, Wedig T, Herrmann H, MacKintosh FC, Weitz DA: **Divalent Cations Crosslink Vimentin Intermediate Filament Tail Domains to Regulate Network Mechanics.** *J Mol Biol* 2010, **399**:637-644.
72. Lin YC, Koenderink GH, MacKintosh FC, Weitz DA: **Viscoelastic properties of microtubule networks.** *Macromolecules* 2007, **40**:7714-7720.
73. Hinner B, Tempel M, Sackmann E, Kroy K, Frey E: **Entanglement, elasticity, and viscous relaxation of actin solutions.** *PRL* 1998, **81**:2614-2617.

Recommended reading:

[Helfand 2011]**

The authors demonstrate the antagonistic interplay between vimentin networks and lamellipodia formation. They show that stimulated lamellipodia formation correlates with local vimentin phosphorylation and network disassembly. Conversely, they show that local disruption of vimentin networks result in excessive lamellipodia formation and loss of cell polarity.

[Seltmann-Fritsch 2013]**

The authors show keratin's major contribution to cell elasticity. Removal of keratin from epithelial cells results in cell loss of cell integrity and increased invasiveness.

[Brangwynne 2006]**

The authors show how embedding microtubules in an elastic medium allows them to withstand higher compression forces. They also develop a macroscopic model of a plastic rod in a gelatin gel to illustrate their theory.

[Murray 2014]*

The authors report that the balance between soluble and insoluble vimentin in cells on a 2D substrate is regulated by surface stiffness. Vimentin solubility is further shown to be sensitive to perturbations of the actin and MT cytoskeleton.

[Mendez 2010]*

The authors demonstrate the contributions of the vimentin cytoskeleton in regulating cell's elasticity and its dependence on the substrate stiffness. Through AFM experiments of cell indentation they show that vimentin's enhancement of cell's elastic behavior increases with substrate stiffness.

[Shabbir 2014]*

The authors make use of micro-patterned substrates to control the shape of mouse fibroblasts and study the resulting cytoskeletal organization. They find that the actin-cytoskeleton organization is more locally-regulated, while the shape of the vimentin cytoskeleton responds to the global shape of the micro-pattern. Finally, they demonstrate the role of vimentin in regulating the polarized shape of the microtubule cytoskeleton.

[Weber 2012]*

The authors show that an externally applied force at cadherins at cell-cell contacts can induce polarized cell protrusions and persistent migration at the tissue level. They further they demonstrate that this local tension induces keratin-network reorganization in the direction of force application via plakoglobin, a member of the catenin family.

[Sakamoto 2013]*

The author's demonstrate the role of the microtubule cytoskeleton in directing vimentin-filament organization. They find that the microtubule plus-end tracking protein APC binds vimentin-filaments directly and promotes their elongation along microtubules.