

Shaping up synthetic cells

Yuval Mulla*, Anders Aufderhorst-Roberts,* Gijsje H. Koenderink†

AMOLF Institute, Science Park 104, 1098 XG Amsterdam

†Corresponding author: g.koenderink@amolf.nl

Abstract

How do the cells in our body reconfigure their shape to achieve complex tasks like migration and mitosis, yet maintain their shape in response to the forces exerted by for instance blood flow and muscle action? Cell shape control is defined by a delicate mechanical balance between active force generation and passive material properties of the plasma membrane and the cytoskeleton. The cytoskeleton forms a space-spanning fibrous network comprising three subsystems; actin, microtubules and intermediate filaments. Bottom up reconstitution of minimal synthetic cells where these cytoskeletal subsystems are encapsulated inside a lipid vesicle provides a powerful avenue to dissect the force balance that governs cell shape control. Although technically demanding, a steady stream of advances in encapsulation techniques has made the reconstitution of shape-changing minimal cells increasingly feasible. In this topical review we provide a route-map of the recent advances in cytoskeletal encapsulation techniques and outline recent reports that have demonstrated shape change phenomena in simple biomimetic vesicle systems. We end with an outlook towards the next steps required to achieve more complex shape changes with the ultimate aim of building a fully functional synthetic cell with the capability to autonomously grow, divide and move.

Introduction

Cells are soft biological machines with a perplexing degree of complexity. Their physical properties and functional behavior are the result of a complex collection of molecular processes that are highly regulated, dynamic and self-organizing. These processes allow complex functions such as information processing, metabolism and multicellular tissue formation. An overarching aspect to all of these processes is the cell's ability to reconfigure its shape to match its functional state, which can be condensed down to two fundamental features: the cell's ability to actively generate mechanical forces and its mechanical response to self-generated as well as external forces.

*These authors contributed equally to this work

In animal cells these two features arise from interactions between the cell's plasma membrane and the cytoskeleton, a composite dynamic biopolymer network comprising three interconnected subsystems: filamentous (F-) actin, microtubules, and intermediate filaments (IFs) (figure 1) [50]. These three subsystems each have their own characteristic mechanical properties and are able to interact with each other and with the plasma membrane to define the cell's mechanical properties and shape. Actin forms a filamentous cortex close to the plasma membrane that is able to exert contractile forces on the membrane through the action of myosin motor proteins that pull on the actin filaments [81]. Actin filaments are also able to treadmill through nucleotide-driven asymmetric polymerization, to facilitate pushing and pulling forces that cause the formation of membrane protrusions or invaginations [18]. Microtubules are highly rigid tubelike fibers that likewise exert forces through asymmetric (de)polymerization as well as motor-driven sliding [60]. These forces are the main driver for establishing cell polarity and separating the chromosomes in dividing cells. Intermediate filaments are more flexible than actin filaments and microtubules and form dense networks between the cell nucleus and the membrane with much slower turnover rates [25]. They serve a vital scaffolding role by providing resilience against large deformations, a phenomenon facilitated by their ability to withstand high tensile strains [62]. Finally the plasma membrane itself also plays a role in mechanics and shape control. Aside from having the flexibility required to accommodate forces generated by the cytoskeleton, the plasma membrane is shaped through changes in lipid composition [16] and interactions with curvature-inducing proteins [79]. Furthermore, permeation of water and ions via aquaporins and ion channels regulates volume and tension [54].

Importantly, the functions of the three cytoskeletal subsystems and the plasma membrane are interdependent. All filamentous systems are able to tether to the membrane [9] and interact with each other both through physical interactions mediated by crosslinkers and motors and through joint biochemical regulation [50]. This complexity makes it very difficult to disentangle the contributions of each subsystem to cell shape control. In recent years researchers have begun to utilize a so-called 'bottom-up' approach to elucidate the complex processes that drive shape change. In this approach cells are "taken apart" with their individual working components being reconstituted in minimal model systems. Such approaches have been used to synthetically recreate protein synthesis [99], vesicular transport [105], self-reproduction [82] and compartmentalized reactions [111] within giant unilamellar lipid vesicles (GUVs), large unilamellar lipid vesicles with a diameter larger than $1\text{ }\mu\text{m}$ or other membrane containers. The ultimate goal of this work is a fully functional synthetic cell in which motility, metabolism and replication are combined together within a single membrane container [53].

Shape change is a cornerstone of this grand goal and has been a topic of interest since the first encapsulation of cytoskeletal proteins inside GUVs in 1989 [27]. Advances in encapsulation with improved yields and better reproducibility now make it possible to construct synthetic cells whose shape is controlled by just a single cytoskeletal subsystem. In this review we outline the state of the

art in encapsulation of cytoskeletal components inside cell-sized GUVs, how these approaches have been used to elucidate the mechanistic basis of cell shape control, and our view on what the probable and necessary developments in this field will be. We focus our attention particularly on advances in the last five years, as summarized in table 2. For information on earlier reports we direct the interested reader to previous review articles [116, 98].

Cytoskeletal Encapsulation

By far the most common encapsulation system for cytoskeletal proteins are GUVs because they share both the size (of order 10-50 μ m) and unilamellarity of eukaryotic cells. Encapsulating cytoskeletal filaments within them leads to relatively simple cell models, but their preparation is a highly non-trivial task. Ideally, the encapsulation process should involve a simple procedure that does not harm the proteins, have a high-throughput, and lead to GUVs that are uniform in size, defect-free, unilamellar, and with a 100% encapsulation efficiency, independent of the protein, lipid and buffer composition. Perhaps unsurprisingly, such an ideal method does not yet exist. However, extensive research has yielded many different methods [35, 49, 90, 101, 110], which each perform well in at least some of these aspects (see table 1). We here provide an overview of these different methods and direct the reader to a recent review which provides more details [112].

Swelling-Based Approaches

The simplest and most long-standing approach to preparing GUVs is by swelling of lipid films [123]. The method simply involves suspending lipids in an organic solvent, drying them on a glass substrate and then resuspending them in an aqueous buffer that may contain the proteins of interest to trigger self-assembly into GUVs. Although the procedure is straightforward, it is lengthy (usually several hours) and tends to give a rather low yield of GUVs. Moreover, the yield and quality of the GUVs strongly depend on lipid and buffer composition [4], making it an inefficient approach for encapsulation. Fortunately there are two swelling-based approaches that boost GUV formation and increase encapsulation efficiencies over wider lipid and buffer composition ranges. These are electroformation and gel-assisted swelling [49] (see figure 2 A).

With electroformation [35] the swelling process is accelerated by depositing the lipids on a conductive surface and applying an alternating electrical field via electrodes. The application of an electric field results in a much higher GUV yield as it continuously exerts forces on the (zwitter-) ionic lipids, and thereby accelerates the separation of the membrane from the surface [5]. However, this method can only be performed in non-physiologically low salt concentrations [5] - limiting its effectiveness for biological applications. In recent years, this limitation has been overcome to some extent by using high frequency oscillations of the AC field [67], although the reported GUV yield is significantly lower than for

conventional electroformation. The need for an electric field can be eliminated entirely by using gel-assisted swelling [49]. Here, an agarose hydrogel is spin coated on a glass slide before the application of the lipid film and the hybrid film is hydrated in a buffer. Unlike electroformation [5], this method also has a good GUV yield in physiological buffers, and for a broad range of lipid types that includes zwitterionic, cationic and anionic lipids as well as lipids with one or more headgroups [124]. Most importantly, proteins can be incorporated into the GUV by adding them to the swelling buffer. The encapsulation efficiency varies among GUVs, but crucially the proteins have been found to be still functional after incorporation [117]. A significant downside to the use of agarose as a hydrogel is that it can become incorporated into the lipid bilayer [49], thereby changing the mechanics of the resulting GUV [71]. Recent work has circumvented this problem by replacing agarose with polyvinyl alcohol [124] or dextran(ethylene glycol) [74]. Furthermore, the size of the GUVs can be tuned by changing the pore size of the hydrogel [74], and the effect of buffer conditions on GUV synthesis rate and yield has been mapped in detail [91].

Emulsion-Based Approaches

An elegant but fundamentally different approach to swelling-based methods is to template GUVs from oil/water interfaces stabilized by lipids (see figure 2 B). This approach is known as the inverse emulsion method [90], and involves forming the inner and outer leaflet of the GUV in two sequential steps. First, an emulsion of water droplets is created by mixing a small volume of water with a large volume of oil containing dissolved lipids. The lipids form a monolayer on the oil-water interface that will ultimately form the inner leaflet of the GUV. Separately the outer leaflet is formed at a bulk interface between a water layer overlaid with an oil layer. The emulsion droplets are then added to the oil phase and forced through the interface by centrifugation, thus forming a bilayer around the droplet and creating a GUV. There are multiple advantages of inverse emulsion over conventional swelling approaches, including the possibility of creating asymmetric GUVs [89] and close control over the encapsulation [90]. The main disadvantages of emulsion-based approaches over swelling-based approaches are their lower yield and the presence of traces of oil in the GUV, altering its mechanics in a way that is not easily quantifiable [17]. To upscale production, the method was translated to microfluidic devices which allow for better control over the steps of droplet creation and bilayer formation. Early reports of this approach used a two-step process in which the initial emulsion droplet was created on a microfluidic chip and the rest of the inverse emulsion protocol remained unchanged. The two steps were later integrated into a single device, especially tailored for GUV production [2] a technique known as continuous Droplet Interface Crossing Encapsulation (cDICE, see figure 2 C). This method is effective for a wide range of buffer conditions and lipid mixtures [11], with the notable drawback that cholesterol incorporates poorly into the GUVs [11]. Compared to conventional inverse emulsion methods, cDICE allows for a much larger yield and a better control over GUV size [2]. However, cDICE is

more technically complex and its use for the formation of asymmetric GUVs has not yet been shown [90].

Other advanced microfluidic techniques in which all inverse emulsion steps are performed on-chip have also been reported [88, 77, 101]. Much like cDICE, each of these methods report higher yields than conventional inverse emulsion approaches, but at the expense of being technically more complex.

Other Approaches

Swelling [46], gel-assisted swelling [20, 115], electroformation (EF) [104], cDICE [56, 73] and especially conventional inverse emulsion [75, 17, 45, 102] approaches have all been used to encapsulate cytoskeletal components. Since none of them are ideal, there have recently been many efforts to develop alternative approaches for GUV production, mostly based on microfluidic technologies [119]. To our knowledge, none of these newer techniques have yet been widely adopted beyond reports of proof-of-principle, likely due to their technical complexity. Below we will discuss the two most well-developed techniques, which are based on double emulsions [6] or jetting [110], as well as a recent method where GUVs are stabilized inside polymersomes during fabrication [125].

Microfluidic Jetting

The basis of microfluidic jetting [110] is conceptually analogous to blowing a bubble: a microfluidic capillary applies a focused jet of fluid against a planar lipid bilayer, causing a protruded lipid microtube to form on the surface that eventually pinches off to form a GUV (see figure 2 D). A drawback of this approach has been the inability to prevent oil inclusions in the resulting GUVs [58], but recent reports have circumvented this by setting the jetting parameters such that the lipid microtube disintegrates non-uniformly, creating two populations of GUVs with distinct sizes [55]. Raman spectroscopy showed that oil was conveniently found to be present only in the population of larger GUVs, with no oil present in the smaller GUVs [55]. However, this inhomogeneous break-up has the tendency to lead to a larger size distribution of the resultant GUVs compared to the homogeneous jetting [110].

Double Emulsion Approach

Double Emulsion Droplets (DED) are water droplets encapsulated by a thin layer of oil, surrounded again by water [6]. DEDs can be used to form GUVs by first including lipids in the oil phase, which form monolayers on both interfaces. The oil phase can then be removed via ethanol-mediated evaporation [113]. Similar approaches have been reported for the creation of multilamellar liposomes [30] or assemblies of several GUVs [29]. A recent development of this technique has involved replacing the oil phase with octanol, which spontaneously splits off from the droplet as it forms a GUV [33]. A downside of this method is that

remnant octanol forms droplets inside the microfluidic chip, which adversely affect GUV stability. However, follow-up work showed that these octanol droplets can be separated from the GUVs due to their density difference [32]. While this technique appears very promising, the quality of the membrane has so far only been assessed in terms of its ability to incorporate the membrane pore protein complex alpha hemolysin [33]. To truly assess whether this technique creates GUVs comparable to other approaches, more detailed characterization of the membrane by Raman spectroscopy [58] or mechanical measurements [17] is required.

Droplet-Stabilized GUVs

Just this year, a novel microfluidic technique was reported that makes use of polymersomes as a precursor to GUVs [125]. Polymersomes are vesicles made from diblock copolymers [36]. They are significantly more stable against mechanical perturbations than lipid-based vesicles, and allow for pico-injection of controlled volumes of reagents using electro-microfluidics [1]. It was shown that the inner leaflet of a polymersome can serve as a template for a supported lipid bilayer, which is formed by bursting encapsulated LUVs. The polymersome can then be filled with proteins of interest using pico-injection and the polymeric template can be removed, releasing a GUV containing pico-injected proteins. Both actin and microtubules could be successfully encapsulated in this way, and transmembrane proteins like integrins have also been incorporated into the membrane [125]. Raman spectroscopy and mechanical experiments indicated that there was no residual oil [125]. Quantitative control over the encapsulant has yet to be demonstrated, but earlier work on pico-injection suggests this should be possible [1].

Triggering Cytoskeletal Polymerization *in Situ*

For encapsulation methods that depend on an intermediate droplet phase, droplet creation necessarily applies shear stresses on the cytosol [110, 6, 90]. Encapsulation methods depending on swelling require proteins to pass through membrane defects in order to be encapsulated [123, 35]. In both cases, this process can be problematic when the cytoskeletal proteins are in filamentous form. Therefore, it is preferable to encapsulate proteins in their monomeric form, and trigger polymerization of filaments *in situ*. The trigger for polymerization differs per cytoskeletal component. For example, actin polymerization can be triggered using magnesium ions [70], whereas microtubule polymerization is often controlled by the addition of GTP [116]. One popular approach is to ensure that the encapsulation process proceeds more quickly than the polymerization process by performing the encapsulation process at a low temperature [117]. Alternatively, one can change the buffer conditions in the GUV after encapsulation. The membrane itself prevents ion exchange between the cytosol and the outer solution, but the inside buffer conditions can nevertheless be changed by inserting pore-

forming peptides or proteins into the membrane [94], or by adding ionophores to the outer solution that transfer ions across the membrane [70].

Anchoring Cytoskeletal Systems to the Membrane

Shape control of cells crucially depends on interactions between the cytoskeleton and the surrounding plasma membrane. This interplay is therefore a central consideration for synthetic cells. All three cytoskeletal subsystems are engaged in interactions with the membrane. Microtubules interact with the membrane via a host of different linkers and membrane proteins [14, 108, 34, 84] while in many cell types intermediate filaments interact with the plasma membrane at protein complexes such as desmosomes, which provide adhesive interactions with neighbouring cells and the extracellular matrix [96]. Of the three subsystems, however, actin plays the most central role because it forms a thin (150 nm) cortical layer on the inner face of the plasma membrane [23]. The actin cortex contributes significantly to cell surface mechanics by providing cortical stiffness and tension, and it also drives shape changes during cell migration and division [24].

One of the most straightforward approaches to mimic actin-membrane coupling in synthetic cells involves the receptor-ligand pair streptavidin and biotin [122]. Streptavidin is a protein with four binding sites to biotin [92], and the resulting bond is among the strongest noncovalent interactions found in nature. Actin can be linked to the inner surface of GUVs by streptavidin when biotinylated actin monomers are incorporated in the actin filaments and biotinylated lipids are included in the membrane mixture [115]. A more transient interaction that is more reminiscent of actin-membrane linkage *in vivo* can be obtained by using 1,2-dioleoyl-3-trimethylammonium-propane (DOTAP) - a synthetic lipid that is not found in nature [52]. Actin directly interacts with this strongly positively charged lipid [47]. One of the most 'biomimetic' approaches that has been developed to anchor the actin cytoskeleton to the membrane of synthetic cells, is by artificially linking purified actin-binding proteins to the membrane [61, 73]. This approach utilizes polyhistidine motifs, which are frequently used as tags in the purification of actin-binding proteins and cleaved off from the protein at the end of purification. When retained, the polyhistidine can be used to bind the protein to synthetic lipids containing a nickel-NTA group. His-tagged actin binding proteins can thus serve as a link between the membrane of a GUV and the encapsulated actin filaments. Actin binding proteins that have been used in this manner include physiologically relevant actin-membrane anchors such as anillin [73] or one of the ERM (Ezrin, Radixin and Moesin) proteins [61]. The ERM proteins are among the most important anchoring proteins in cells [37]. To fully reconstitute their *in vivo* functionality, it is likely important to recruit ERM proteins to the membrane via phosphatidylinositol, 4,5-bisphosphate (PtdIns(4,5)P₂) (*PIP*₂), a negatively charged phospholipid involved in many signaling pathways [78]. It was recently shown by fluorescence recovery after photobleaching experiments that ezrin-mediated membrane-cortex tethering in

cells involves long-lived interactions with the membrane via ezrin's FERM domain coupled with shorter-lived interactions with the actin cortex [40]. It was proposed that ezrin acts as a link that leads to low friction between the membrane and the cortex, which may be important for tuning cortical organization and contractility. It is not straightforward to reconstitute ERM/ PIP_2 interactions due to experimental challenges in controlling phosphorylation of ERM, which regulates its actin-binding activity [37], and in working with PIP_2 , which is prone to degradation and is readily solubilized from the membrane into the aqueous solution [19]. Actin-membrane anchoring via PIP_2 -dependent membrane binding of ERM has been reported on supported lipid bilayers, but not yet in GUVs [12].

Another 'biomimetic' approach to anchor the actin cytoskeleton to the membrane of synthetic cells is by nucleating actin at the membrane using nucleation-promoting proteins such as the Arp2/3 activator VCA bound to the membrane [94]. In this case, actin filaments are only attached to the membrane at one end. This method has been demonstrated to result in GUVs with a thin actin cortex localized underneath the membrane [94].

Mechanics

Many different approaches exist for studying the mechanics of GUVs having an internal cytoskeleton. As with studies of shape change, the majority of studies, both recent and historic, have focused on actin. Membrane-anchored actin cortices have been shown to contribute to the elastic response of GUVs [76, 103, 104], being significantly harder to compress by AFM than empty GUVs [103, 104] (see figure 3A). Using micropipette aspiration, cortical stiffness was reported to increase when the actin was crosslinked by dynactin [76] (see figure 3B). Microrheology measurements on GUVs obtained by observing the thermal fluctuations of beads attached to the outer surface of the GUV or by actively exerting a force on these beads [70] revealed the bending and shear moduli of GUVs with an actin cortex. The resulting moduli as well as the time-dependent mechanics were found to be similar to those of bulk actin networks [44], confirming the importance of the actin cortex to cell surface mechanics.

An alternative approach to quantifying mechanics is to combine micropipette aspiration with optical tweezers [17] (see figure 3C). Here, the GUV is held in place with a micropipette and the optical tweezers are used to pull a membrane nanotube from the GUV via a bead attached to the membrane. To determine the membrane bending modulus, the force on the bead in the optical trap can be measured as a function of the pressure applied via the micropipette. Whereas steady state values of the membrane bending modulus were not affected, the membrane dynamics were slowed down by the presence of an actin shell [17]. This result suggests that the actin cortex increases membrane friction [17]. This effect was attributed to actin decreasing the diffusion of lipids within the membrane, consistent with other studies [42, 48]. Membrane nanotubes can also be extruded via hydrodynamic drag at constant force [45]. Extruded nanotubes

were observed to be shorter when the actin cortex was present, again pointing to a role of actin in reducing lipid mobility.

Generating Shape Change

A key functionality of the cytoskeleton in general, and of the actomyosin network especially is to dynamically control cell shape [81]. Recent work has demonstrated that some features of cytoskeletal shape control can be minimally reconstituted, either by encapsulating individual filamentous systems inside GUVs [63] or alternatively by encapsulating entire cellular extracts [3].

Reconstituted Cytoskeletal Systems

It is well established that due to their intrinsic high stiffness, microtubules polymerizing inside a GUV can cause the formation of membrane protrusions [63] that bear some resemblance to microtubule-based protrusions in cells [15]. It was shown that microtubule protrusion can be reversed in reconstituted systems by applying hydrostatic pressure to promote microtubule depolymerization [46] (see figure 4 A). By cycling the applied pressure, the GUV shape could be repeatedly switched between more or less protruded. In the presence of GTP, microtubules exhibit a characteristic phenomenon known as dynamic instability, whereby the ends stochastically switch between growing and shrinking states. To our knowledge, there are not yet any reports of the time dependence of protrusion formation by dynamic microtubules.

In contrast to microtubules, actin filaments are not stiff enough to independently deform GUVs [22]. However, work from our lab has shown that bundled actin *can* control the shape of a lipid bilayer [115] (see figure 4 B). This was achieved by comparing uncrosslinked F-actin with actin bundled by the bundling protein fascin within GUVs. Whereas uncrosslinked actin GUVs were spherical, actin bundling caused a wide variety of shapes, including some with protrusions. The competition between membrane resistance and actin bundle stiffness was addressed by varying the fascin-to-actin ratio, where increased stiffness caused the actin bundles to become increasingly straight, deforming the GUVs more.

In addition to the active (dis)assembly dynamics of actin and microtubules, cells also use the activity of molecular motors to achieve shape control. An example of motor-based shape control in synthetic cells was demonstrated by co-encapsulating actin filaments and myosin II motors within a GUV [117, 20] (see figure 4 C). Here, actin was anchored to the membrane via biotin-streptavidin linkages. Myosin activity was shown to be sufficient to cause the actomyosin network to contract and even to detach from the membrane in case of weak anchoring [20]. By contrast, when such an actomyosin network was attached to the outside of a GUV, actomyosin contractility caused GUV crushing. It was recently shown how cortical tension can also cause more subtle membrane remodeling in GUVs, using anillin as a membrane anchor and adjusting membrane tension by adding glucose to the outside solution [73]. Depending on

the myosin and anillin concentrations, a wide variety of GUV shapes could be generated such as faceted surfaces and extrusion of tether-like shapes. Moreover, GUVs with membrane blebs were observed (see figure 4 D). Blebs are spherical membrane protrusions that are thought to drive some forms of cell migration and to regulate cortical tension in dividing cells [8, 106]. Theoretical studies and observations on cells had suggested that bleb expansion is driven by the contractile actomyosin cortex, which generates hydrostatic pressure in the cytoplasm [114]. This hypothesis was elegantly validated by the *in vitro* reconstitution of blebs in GUVs containing a minimal actomyosin system.

Reconstituted Whole Cellular Extracts

Cytoplasmic extracts provide an interesting alternative approach to reconstitute a cytoskeletal system capable of mimicking complex aspects of cell shape control [7, 72, 120]. Extracts have a significantly more complex composition compared to bottom-up reconstituted mixtures, which makes a detailed mechanistic interpretation of experimental observations more difficult yet simplifies the reconstitution of complex processes that require a large set of proteins [10, 18]. Cytoplasmic extracts contain over 11 000 proteins [127], including a multitude of actin binding proteins like cofilin, profilin, ARP2/3 and formin which together cause continuous polymerization and depolymerization of actin filaments [3] and signaling complexes such as CPC and Centralspindlin which allow for communication between different cytoskeletal components [39]. Cytoplasmic extracts from amoeba were encapsulated inside emulsion droplets and anchored to the interface via DOTAP [51, 83]. The actomyosin cortex caused an observable wrinkling of the lipid interface that was modeled theoretically by considering the balance between cortex elasticity and contractility [51]. Extracts from oocytes reconstituted in droplets with actin nucleators localized at the surface were shown to drive flows of cortical actin, reminiscent of polarizing cortical flows observed in oocytes and early embryonic cells [3, 93]. The flows could be tuned by adding crosslinkers of actin and by tuning the spatial localization of F-actin nucleators and actin turnover. Recently, interactions of the actin and microtubule cytoskeleton were likewise reconstituted inside emulsion droplets. It was shown that F-actin contractility in combination with actin-bound signaling proteins could drive microtubule nucleation [26].

Bio-Inspired Novel Functionality

So far, all of the papers that we have discussed used biological components with the goal to understand aspects of cellular behavior. The same biological components can also be used to create entirely novel functionality. This philosophy has been applied to systems comprising microtubules and kinesin motor proteins encapsulated inside GUVs [56]. A dense layer of microtubules was found to form a two-dimensional liquid crystal phase. The kinesins caused active sliding between microtubules, creating a so-called active nematic [100].

This active nematic was confined to the surface of the GUVs and was shown to cause the GUV to undergo constant shape changing [57]. Although this nematic microtubule phase is not directly biomimetic [126], the resultant shapes were surprisingly reminiscent of filopodia-like protrusions and even migration of droplet-confined active nematics was observed [100] (figure 5A).

In another approach towards bioinspired functionality with encapsulation, a GUV referred to as a 'molecular robot' was created by encapsulating kinesins, microtubules and photo-activatable DNA connectors within a GUV [102]. Three types of single stranded DNA were used: one was attached to the membrane, one to the kinesins and upon light activation a third DNA strand could connect the two other strands. As a result, light activation triggered recruitment of kinesins to the membrane via DNA hybridization. Subsequently, kinesin-bound microtubules were recruited to the surface, causing the GUV to change shape. Due to the active sliding between the kinesins and microtubules, continuous shape changes were observed as long as the 'molecular robot' was exposed to light [102]. This study is an example of how different techniques derived from biology, here DNA nanotechnology and protein reconstitution, can provide significantly enhanced function.

The shape of things to come

It is becoming increasingly clear that encapsulated systems are an essential tool to understanding the fundamentals of cell shape change and mechanics. Lately there has been a convergence of numerous technical advances that make reliable and biomimetic encapsulated systems a possibility. At the forefront of these are advances in encapsulation, with automated techniques such as cDICE now facilitating high yields and accessibility to a broad range of lipid compositions and buffer conditions to suit the assembly and/or dynamics of the desired encapsulated cytoskeletal protein [2]. This improved versatility is likely to facilitate better control of encapsulated systems as a more comprehensive understanding of the influence of plasma membrane composition on encapsulated protein remodeling is reached. This in itself is a separate and vibrant field of study [9]. In addition, creative solutions to long-standing concerns such as incomplete removal of residual oil from emulsion encapsulation are also being overcome through novel approaches [125]. The true test of the utility of these new approaches will be whether they become widely adopted outside of the laboratory of origin. The high technical barriers to realizing this may be a limiting factor.

Alongside advances in encapsulation, there now exists a broad library of different cytoskeleton membrane anchoring approaches such that researchers may select anchoring that is weak, strong, fast or slow. Investigating the influence of membrane anchor dynamics and affinity in this way represents, in our view, a significant untapped source of research potential. While studies have shown, by proof of principle, that the actin cortex influences GUV mechanics [76, 104], complementary rheological data on bulk actin networks show a richness of mechanical response [59, 69, 128] that is almost entirely unstudied in encapsulated

systems. Even more pressingly, mechanical data on reconstituted *active* actin cortices is entirely absent. For example, in bulk actin networks it has been shown that myosin activity dramatically stiffens actin networks by pulling out thermal fluctuations [59], but mechanical studies on cells showed that myosin II activity can stiffen adherent cells while softening cells in suspension [21, 38]. To understand this varied behavior, it will be essential to measure mechanical properties of reconstituted active cortices inside GUVs.

When considering the diversity of cytoskeletal components that have been successfully encapsulated, intermediate filaments are glaringly notable by their absence. This may be because their indirect contribution to shape change makes them a less obvious candidate for study. In contrast to actin filaments or microtubules, their turnover rates are significantly slower (of order 1 hour) and this turnover is more difficult to reconstitute as it is governed by phosphorylation/dephosphorylation rather than by nucleotides and dependent on interactions with the microtubule and actin cytoskeleton [85]. While this makes their influence on cell shape change difficult to study by reconstituted approaches, their influence on mechanics should be more easily measurable. For example, their reported high extensibility could have an influence on the GUV's nonlinear mechanics in response to nanotube extrusion as previously quantified for actin [17]. In this context, it would also be interesting to reconstitute membrane anchoring, which appears to play an important role in the mechanical scaffolding function of intermediate filaments in cells [96].

A major milestone in synthetic cells that has now been reached is the possibility to not only observe shape change in synthetic cells but to actively control it, either by composition [73] or by external triggers such as hydrostatic pressure [46] or light [102]. This paves the way for reconstitution of dynamic cellular processes such as cell motility. A central requirement of motility is symmetry breaking, a phenomenon reported in cellular extracts [3] and also in purified actin systems polymerized on the outer surface of polystyrene beads and GUVs [118] (figure 5A). Studies of migration in cells have revealed that an important requirement for establishing and maintaining cell polarity is close coupling between all three cytoskeletal subsystems [50]. For example it has been shown that intermediate filaments in native cells are reorganized by microtubule-induced cell polarization [66], while conversely, their organized structures serve as a template for further microtubule growth [43]. Similarly, traction forces are generated by the actin cytoskeleton but intermediate filaments play a role in their directional orientation [28]. Lastly, co-organization of microtubules and actin plays an important role in controlling the front-back polarity of cells [13]. This crosstalk was recently reconstituted *in vitro* but was not yet encapsulated in GUVs [95]. Similarly, cell division requires close crosstalk between the actin and microtubule cytoskeleton: the actin cortex facilitates the formation, positioning and orientation of the mitotic spindle, while the spindle directs the formation and activity of the actomyosin ring at the cell's equator [65]. Spindle-like microtubule structures have recently been reconstituted inside emulsion droplets by co-encapsulating centrosomes with tubulin, motor proteins, cross-linkers, and cortical dynein anchors [64, 121] (figure 5B). Likewise, actomyosin ring con-

striction was successfully reconstituted inside emulsion droplets, where crowding agents caused actin to bundle and to form a ring at the droplet equator that contracted in the presence of myosin [80]. It will be exciting to combine these microtubule and actin-based structures to achieve spatial control over cell division in synthetic cells. Until now, efforts to reconstitute cell division in synthetic cells are based mainly on the prokaryotic FtsZ system, a tubulin homolog in *E. Coli* that forms a so-called “z-ring”, which contributes to cell constriction in concert with the cell-wall building machinery [86]. This approach is significantly more mature than efforts based on eukaryotic systems. Not only has anchoring to the plasma membrane via the membrane proteins FtsA and ZipA been achieved but, under certain conditions, division of the entire GUV has been achieved [87] (figure 5B). Furthermore, spatial regulation of FtsZ assembly was achieved by adding proteins of the Min family, which form spatial patterns by a reaction-diffusion mechanism [109].

In the long run, reconstitution of eukaryotic life by synthetic cell approaches has to consider the interactions between cells and their surrounding tissue matrix that drive multicellularity. Proof-of-principle evidence exists that GUVs can be made selectively adhesive to extracellular matrix by incorporating integrin receptors in the membrane [41, 125]. Also, cadherin-based adhesion between cells has already been mimicked in biomimetic systems [107]. The ultimate challenge will be to combine all these individual aspects of cell shape control within a single system to achieve synthetic cells with truly life-like functionality.

Acknowledgements

This work is part of the research program of the Netherlands Organisation for Scientific Research (NWO). We gratefully acknowledge financial support from an ERC Starting Grant (335672-MINICELL) and from the Foundation for Fundamental Research on Matter (FOM Program grant nr 143).

Bibliography

References

- [1] A. R. Abate, T. Hung, P. Mary, J. J. Agresti, and D. A. Weitz. High-throughput injection with microfluidics using picoinjectors. *Proceedings of the National Academy of Sciences*, 107(45):19163–19166, 2010.
- [2] Manouk Abkarian, Etienne Loiseau, and Gladys Massiera. Continuous droplet interface crossing encapsulation (cDICE) for high throughput monodisperse vesicle design. *Soft Matter*, 7(10):4610, 2011.

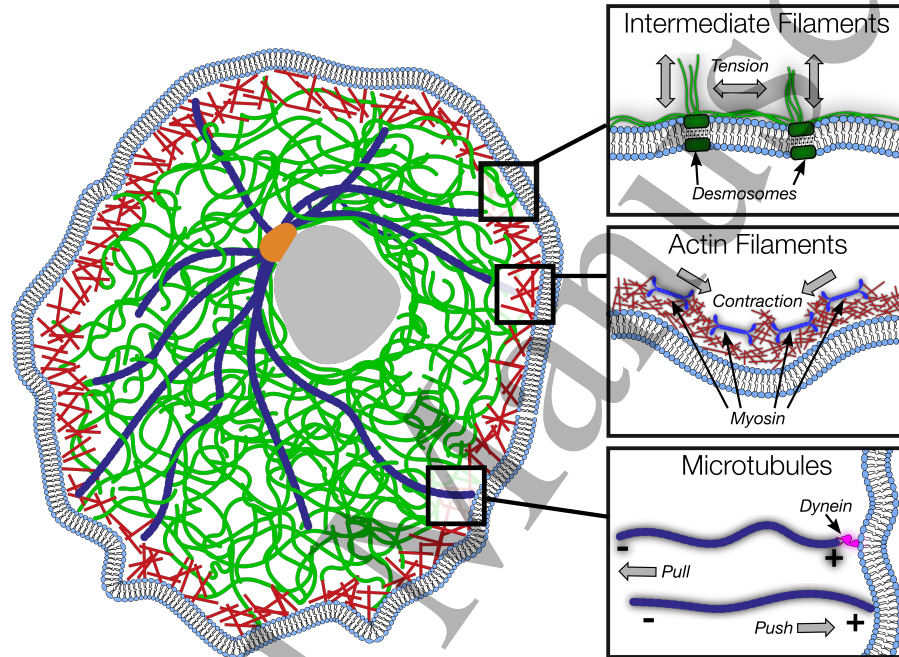


Figure 1: Schematic of the cytoskeletal organization of an interphase cell adhered to an underlying substrate. Intermediate filaments (green) form a dense network that provides mechanical resistance against large deformations and connects the cell nucleus to the cell periphery. The actin cortex (red) is anchored to the membrane by numerous interactions such as the ERM (Ezrin, Radixin and Moesin) family of proteins, which is mediated by the lipid PIP_2 . Active contraction is caused by filament sliding, driven by myosin motor proteins, thus regulating cell surface stiffness and creating high hydrostatic pressure inside the cell. Microtubules (blue) exert pushing and pulling forces on the cell membrane, crucial for separating the chromosomes during cell division, which is driven by polymerization, depolymerization and motor proteins such as dynein which induce sliding forces and act as membrane anchors. The distinct functions and their interplay with each other make these three subsystems ideally suited for study in synthetic cell models.

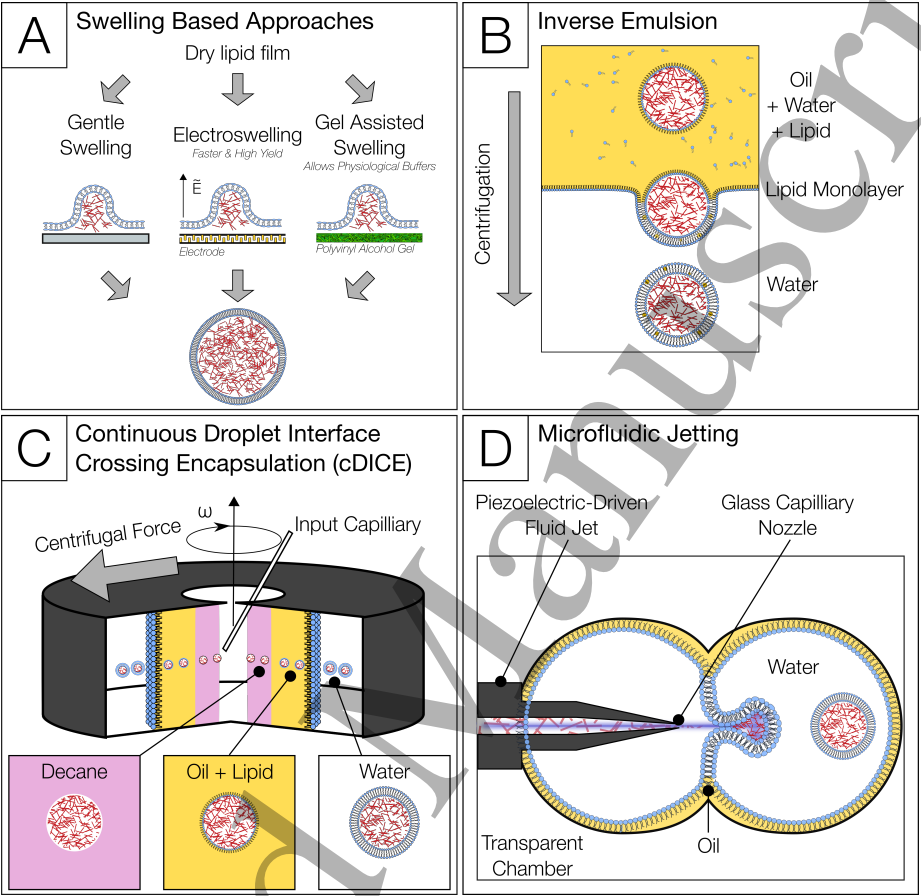


Figure 2: Overview of different methods used to encapsulate proteins inside GUVs (see main text for details): A) swelling-based methods [110, 6, 90] involve spontaneous GUV formation upon swelling of a lipid film deposited on a surface by the addition of an aqueous solution. B) With the Inverse Emulsion method [90], water-in-oil droplets are created emulsification of a mixture of a water phase with an oil solution containing lipids. The lipids form a monolayer on the water droplets that will constitute the inner leaflet of the bilayer of the GUV. Next, the water-in-oil emulsion is centrifuged through a water-oil interface with another lipid film. As a result, both lipid films zipper and form a GUV. C) continuous droplet interface crossing (cDICE [2]) is based on the same principle as Inverse Emulsion. However, as the droplet formation process is well-controlled, the GUV yield is typically much larger and more monodisperse. D) A large planar lipid bilayer can be created using two water droplets submerged in a solution of lipids in oil. Afterwards, GUVs can be formed by allowing an inkjet to blow on the planar lipid bilayer [110].

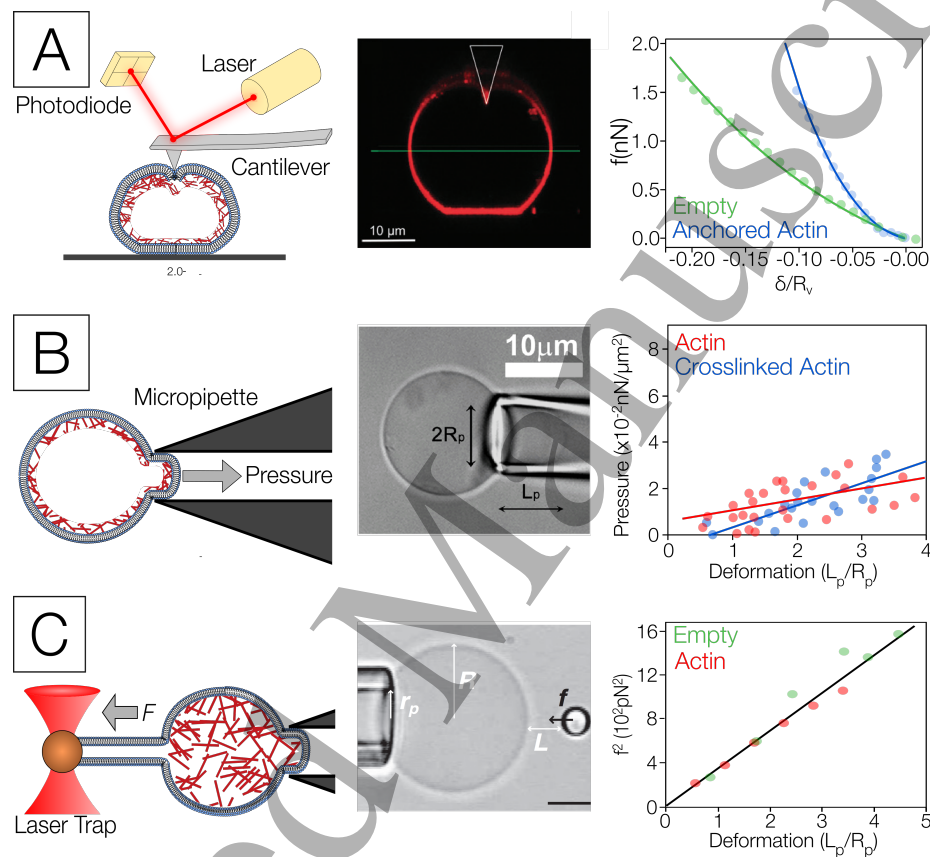


Figure 3: Examples of mechanical characterization of synthetic cells (see main text for details). A) Nanoindentation of GUVs with (blue curve) or without (green) an actin cortex showed that cortices made the GUVs significantly harder to compress [104]. B) Micropipette aspiration of synthetic cells containing actin with or without dynacortin showed hints of an influence of actin cross linking [76]. C) Optical tweezers were used in combination with micropipette aspiration to pull membrane tethers from either empty GUVs (green) or GUVs containing actin in the cytosol (red) [17]. The force required to pull a tether was insensitive to the presence of actin in the cytosol, consistent with the absence of membrane-actin anchoring (scale bar is 5 μ m).

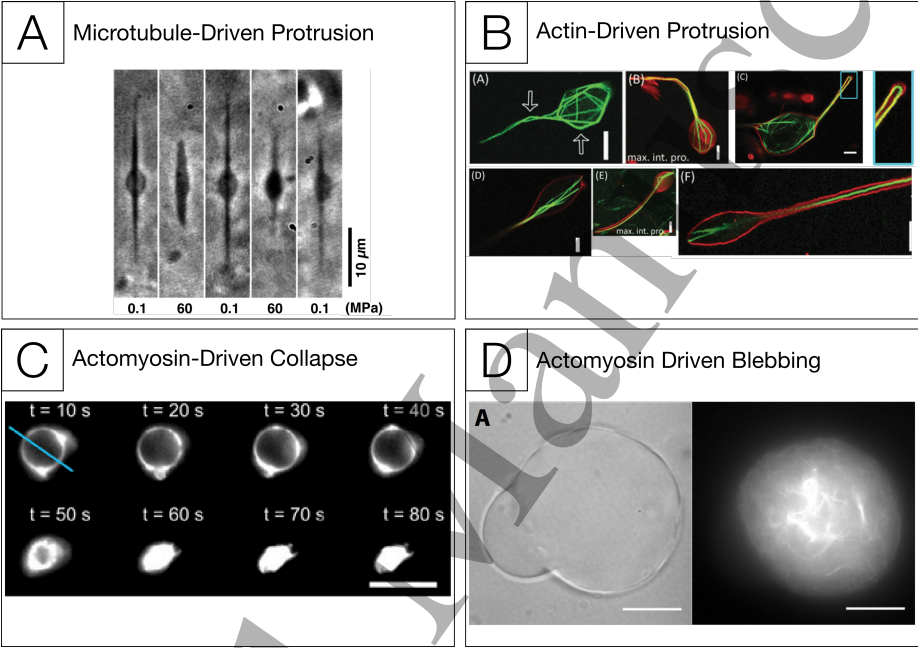


Figure 4: Several examples are shown of GUV shape changes achieved by encapsulation of cytoskeletal components. A) Similar shapes can be observed with microtubules in the absence of microtubule crosslinking proteins. Moreover these shape changes can be reversed by increasing the osmotic pressure to depolymerize the microtubules [46]. B) Actin bundles formed by co-encapsulation with the bundling protein fascin cause membrane protrusions, with geometries depending on the ratio of actin-to-fascin (scale bars are $5\text{ }\mu\text{m}$) [115]. C) When an actomyosin cortex is attached to the outer surface of a GUV, the GUV is crushed due to myosin-driven network contraction (scale bar is $10\text{ }\mu\text{m}$) [20]. D) When an actomyosin cortex is attached on the inner surface of a GUV, the balance of hydrostatic pressure and actomyosin contractility causes bleb-like shapes (scale bar is $20\text{ }\mu\text{m}$) [73].

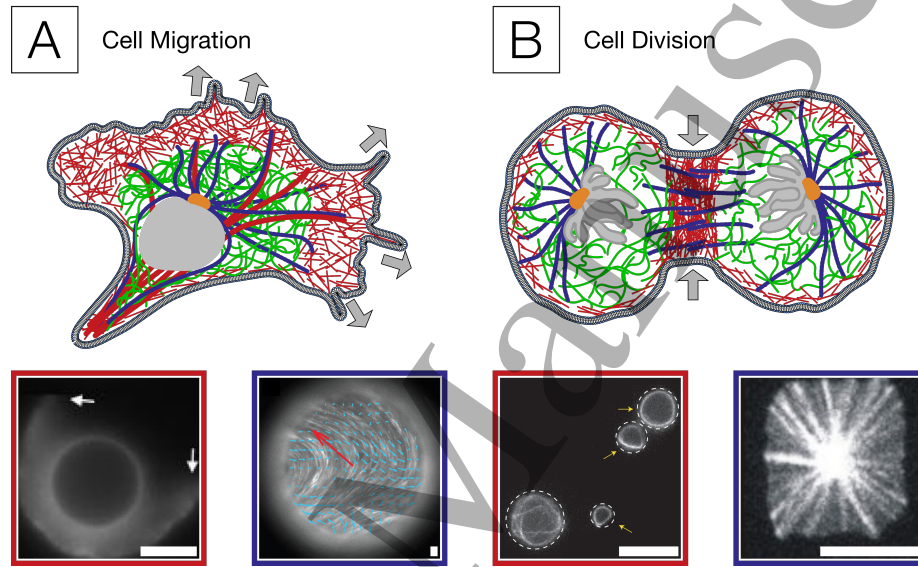


Figure 5: Examples of fundamental cell shape change phenomena that will represent the next steps in bottom-up reconstitution. The colour schemes are identical to figure 1. (A) In motile cells, forces are exerted by both contractile actomyosin and dynamically growing and shrinking microtubules. Basic motility has been demonstrated in actin-coated beads which are propelled upon rupturing of the actin shell (bottom left) [118], whereas a nematic solution of microtubules and kinesins has been shown to propel droplets via the continuous motion of the active nematic (bottom right) [100]. (B) Cell division is created by contractile forces of the actomyosin ring and chromosome segregation by microtubules. An important aspect of this division includes the assembly, and subsequent contraction of the actomyosin ring which has been observed to occur upon confinement to a small enough droplet (bottom left) [87]. Encapsulated microtubules have been shown to self-assemble into asters and subsequently orient themselves in the center of a confined area due to pulling forces from cortical dynein attached to shrinking microtubules (bottom right) [64]. All scale bars are $10\ \mu m$.

[3] E. Abu Shah and K. Keren. Symmetry breaking in reconstituted actin cortices. *eLife*, 3:e01433–e01433, apr 2014.

[4] K. Akashi, H. Miyata, H. Itoh, and K. Kinoshita. Preparation of giant liposomes in physiological conditions and their characterization under an optical microscope. *Biophysical Journal*, 71(6):3242–3250, 1996.

[5] M Angelova and D. Dimitrov. A mechanism of liposome electroformation. *Trends in Colloid and Interface Science II*, 67:59–67, 1988.

[6] Laura R Arriaga, Sujit S Datta, Shin-Hyun Kim, Esther Amstad, Thomas E Kodger, Francisco Monroy, and David a Weitz. Ultrathin Shell Double Emulsion Templated Giant Unilamellar Lipid Vesicles with Controlled Microdomain Formation. *Small (Weinheim an der Bergstrasse, Germany)*, pages 1–7, oct 2013.

[7] J. M. Barry and R. W. Merriam. Swelling of hen erythrocyte nuclei in cytoplasm from *Xenopus* eggs. *Experimental Cell Research*, 71(1):90–96, 1972.

[8] Martin Bergert, Anna Erzberger, Ravi A. Desai, Irene M. Aspalter, Andrew C. Oates, Guillaume Charras, Guillaume Salbreux, and Ewa K. Paluch. Force transmission during adhesion-independent migration. *Nature Cell Biology*, 17(4):524–529, 2015.

[9] Magdalena Bezanilla, Amy S Gladfelter, David R Kovar, and Wei-Lih Lee. Cytoskeletal dynamics: a view from the membrane. *J Cell Biol*, 209(3):329–337, 2015.

[10] Maté Biro, Yves Romeo, Sonja Kroschwald, Miia Bovellan, Annett Boden, Joseph Tcherkezian, Philippe P Roux, Guillaume Charras, and Ewa K Paluch. Cell cortex composition and homeostasis resolved by integrating proteomics and quantitative imaging. *Cytoskeleton (Hoboken, N.J.)*, 754(November):741–754, oct 2013.

[11] Matthew C. Blosser, Benjamin G. Horst, and Sarah L. Keller. cDICE method produces giant lipid vesicles under physiological conditions of charged lipids and ionic solutions. *Soft Matter*, 12(35):7364–7371, 2016.

[12] Sabine Bosk, Julia A. Braunger, Volker Gerke, and Claudia Steinem. Activation of F-actin binding capacity of ezrin: Synergism of PIP2 interaction and phosphorylation. *Biophysical Journal*, 100(7):1708–1717, 2011.

[13] Benjamin P. Bouchet and Anna Akhmanova. Microtubules in 3D cell motility. *Journal of Cell Science*, 130(1):39–50, 2017.

[14] Benjamin P. Bouchet, Rosemarie E. Gough, York Christoph Ammon, Dieudonné van de Willige, Harm Post, Guillaume Jacquemet, A. F. Maarten Altelaar, Albert J.R. Heck, Benjamin T. Gault, and Anna Akhmanova. Talin-KANK1 interaction controls the recruitment of cortical

microtubule stabilizing complexes to focal adhesions. *eLife*, 5(JULY):1–23, 2016.

- [15] Benjamin P. Bouchet, Ivar Noordstra, Miranda van Amersfoort, Eugene A. Katrukha, York Christoph Ammon, Natalie D. ter Hoeve, Louis Hodgson, Marileen Dogterom, Patrick W.B. Derksen, and Anna Akhmanova. Mesenchymal Cell Invasion Requires Cooperative Regulation of Persistent Microtubule Growth by SLAIN2 and CLASP1. *Developmental Cell*, 39(6):708–723, 2016.
- [16] Andrew Callan-Jones, Benoit Sorre, and Patricia Bassereau. Curvature-driven lipid sorting in biomembranes. *Cold Spring Harbor perspectives in biology*, 3(2), feb 2011.
- [17] Clément Campillo, Pierre Sens, Darius Köster, Léa-Laetitia Pontani, Daniel Lévy, Patricia Bassereau, Pierre Nassoy, and Cécile Sykes. Unexpected membrane dynamics unveiled by membrane nanotube extrusion. *Biophysical journal*, 104(6):1248–56, mar 2013.
- [18] Marie-France Carlier and Shashank Shekhar. Global treadmilling coordinates actin turnover and controls the size of actin networks. *Nature Reviews Molecular Cell Biology*, 2017.
- [19] Kévin Carvalho, Laurence Ramos, Christian Roy, and Catherine Picart. Giant unilamellar vesicles containing phosphatidylinositol(4,5)bisphosphate: characterization and functionality. *Biophysical journal*, 95(9):4348–60, nov 2008.
- [20] Kevin Carvalho, Feng-Ching Tsai, Lees Edouard, Voituriez Raphael, Gijse H. Koenderink, Feng Zhang, Simon J Morley, and Cecile Sykes. Cell-sized liposomes reveal how actomyosin cortical tension drives shape change. *Proceedings of the National Academy of Sciences*, 110(49):19968–19968, nov 2013.
- [21] Chii J. Chan, Andrew E. Ekpenyong, Stefan Golfier, Wenhong Li, Kevin J. Chalut, Oliver Otto, Jens Elgeti, Jochen Guck, and Franziska Lautenschläger. Myosin II Activity Softens Cells in Suspension. *Biophysical Journal*, 108(8):1856–1869, 2015.
- [22] Masataka Chiba, Makito Miyazaki, and Shin’Ichi Ishiwata. Quantitative analysis of the lamellarity of giant liposomes prepared by the inverted emulsion method. *Biophysical Journal*, 107(2):346–354, 2014.
- [23] Andrew G Clark, Kai Dierkes, and Ewa K Paluch. Monitoring actin cortex thickness in live cells. *Biophysical journal*, 105(3):570–80, aug 2013.
- [24] Andrew G Clark, Ortrud Wartlick, Guillaume Salbreux, and Ewa K Paluch. Stresses at the Cell Surface during Animal Cell Morphogenesis. *Current biology*, 24(10):R484–94, 2014.

[25] Gülsen Çolakoglu and Anthony Brown. Intermediate filaments exchange subunits along their length and elongate by end-to-end annealing. *The Journal of cell biology*, 185(5):769–777, 2009.

[26] A. Colin, L. Bonnemay, C. Gayraud, J. Gautier, and Z. Gueroui. Triggering signaling pathways using F-actin self-organization. *Scientific Reports*, 6(May):1–12, 2016.

[27] Jorge Daniel Cortese, Bill Schwab Iii, Carl Frieden, and Elliot L Elson. Actin polymerization induces a shape change in actin-containing vesicles. *Biochemistry*, 86(August):5773–5777, 1989.

[28] Nancy Costigliola, Liya Ding, Christoph J Burckhardt, Sangyoon J Han, Edgar Gutierrez, Andressa Mota, Alex Groisman, Timothy J Mitchison, and Gaudenz Danuser. Vimentin fibers orient traction stress. *Proceedings of the National Academy of Sciences*, page 201614610, 2017.

[29] Nan Nan Deng, Maaruthy Yelleswarapu, and Wilhelm T.S. Huck. Monodisperse Uni- and Multicompartment Liposomes. *Journal of the American Chemical Society*, 138(24):7584–7591, 2016.

[30] Nan-Nan Deng, Maaruthy Yelleswarapu, Lifei Zheng, and Wilhelm T. S. Huck. Microfluidic Assembly of Monodisperse Vesosomes as Artificial Cell Models. *Journal of the American Chemical Society*, page jacs.6b10977, 2016.

[31] Siddharth Deshpande, Anthony Birnie, and Cees Dekker. On-chip density-based purification of liposomes. *Biomicrofluidics*, 11(3):034106, 2017.

[32] Siddharth Deshpande, Yaron Caspi, Anna E. C. Meijering, and Cees Dekker. Octanol-assisted liposome assembly on chip. *Nature Communications*, 7:10447, 2016.

[33] Siddharth Deshpande and Thomas Pfohl. Real-Time Dynamics of Emerging Actin Networks in Cell-Mimicking Compartments. *Plos One*, 10(3):e0116521, 2015.

[34] Florencia di Pietro, Arnaud Echard, and Xavier Morin. Regulation of mitotic spindle orientation: an integrated view. *EMBO reports*, 17(8):1106–1130, 2016.

[35] D. S. Dimitrov and M. I. Angelova. Lipid swelling and liposome formation on solid surfaces in external electric fields. *New Trends in Colloid Science*, 56:48–56, 1987.

[36] B. M. Discher. Polymersomes: Tough Vesicles Made from Diblock Copolymers. *Science*, 284(5417):1143–1146, 1999.

[37] Richard G. Fehon, Andrea I. McClatchey, and Anthony Bretscher. Organizing the cell cortex: the role of ERM proteins. *Nature Reviews Molecular Cell Biology*, 11(4):276–287, 2010.

- [38] Pablo Fernández, Pramod A. Pullarkat, and Albrecht Ott. A Master Relation Defines the Nonlinear Viscoelasticity of Single Fibroblasts. *Biophysical Journal*, 90(10):3796–3805, 2006.
- [39] C. M. Field, A. C. Groen, P. A. Nguyen, and T. J. Mitchison. Spindle-to-cortex communication in cleaving, polyspermic *Xenopus* eggs. *Molecular Biology of the Cell*, 26(20):3628–3640, 2015.
- [40] Marco Fritzsche, Alexandre Lewalle, Tom Duke, Karsten Kruse, and Guillaume Charras. Analysis of turnover dynamics of the submembranous actin cortex. *Molecular biology of the cell*, 24(6):757–67, 2013.
- [41] Johannes P. Frohnmayr, Dorothea Brüggemann, Christian Eberhard, Stefanie Neubauer, Christine Mollenhauer, Heike Boehm, Horst Kessler, Benjamin Geiger, and Joachim P. Spatz. Minimal Synthetic Cells to Study Integrin-Mediated Adhesion. *Angewandte Chemie - International Edition*, 54(42):12472–12478, 2015.
- [42] Takahiro K Fujiwara, Kokoro Iwasawa, Ziya Kalay, Taka A Tsunoyama, Yusuke Watanabe, Yasuhiro M Umemura, Hideji Murakoshi, Kenichi G N Suzuki, Yuri L Nemoto, Nobuhiro Morone, and Akihiro Kusumi. Confined diffusion of transmembrane proteins and lipids induced by the same actin meshwork lining the plasma membrane. *Molecular biology of the cell*, 27:11–81, 2016.
- [43] Zhuo Gan, Liya Ding, Christoph J Burckhardt, Jason Lowery, Assaf Zaritsky, Karlyndsay Sitterley, Andressa Mota, Nancy Costigliola, Colby G Starker, Daniel F Voytas, et al. Vimentin intermediate filaments template microtubule networks to enhance persistence in cell polarity and directed migration. *Cell systems*, 3(3):252–263, 2016.
- [44] M. L. Gardel, M. T. Valentine, J. C. Crocker, A. R. Bausch, and D. A. Weitz. Microrheology of Entangled F-Actin Solutions. *Physical Review Letters*, 91(15):158302, 2003.
- [45] Karine Guevorkian, John Manzi, Lea-laetittia Pontani, Francoise Brochard-Wyart, and Cecile Sykes. Mechanics of Biomimetic Liposomes Encapsulating an Actin Shell. *Biophysical Journal*, 109(12):2471–2479, 2015.
- [46] Masahito Hayashi, Masayoshi Nishiyama, Yuki Kazayama, Taro Toyota, Yoshie Harada, and Kingo Takiguchi. Reversible Morphological Control of Tubulin-Encapsulating Giant Liposomes by Hydrostatic Pressure. *Langmuir*, 32(15):3794–3802, 2016.
- [47] George R. Heath, Benjamin R G Johnson, Peter D. Olmsted, Simon D. Connell, and Stephen D. Evans. Actin assembly at model-supported lipid bilayers. *Biophysical Journal*, 105(10):2355–2365, 2013.

[48] Fabian Heinemann, Sven K. Vogel, and Petra Schwille. Lateral membrane diffusion modulated by a minimal actin cortex. *Biophysical Journal*, 104(7):1465–1475, 2013.

[49] Kim S Horger, Daniel J Estes, Ricardo Capone, and Michael Mayer. Films of Agarose Enable Rapid Formation of Giant Liposomes in Solutions of Physiologic Ionic Strength. *Journal of the American Chemical Society*, 131(5):1810–1819, 2009.

[50] Florian Huber, Adeline Boire, Magdalena Preciado López, and Gijse H Koenderink. Cytoskeletal crosstalk: when three different personalities team up. *Current Opinion in Cell Biology*, 32:39–47, feb 2015.

[51] Hiroaki Ito, Yukinori Nishigami, Seiji Sonobe, and Masatoshi Ichikawa. Wrinkling of a spherical lipid interface induced by actomyosin cortex. *Physical Review E - Statistical, Nonlinear, and Soft Matter Physics*, 92(6):1–8, 2015.

[52] Satoshi Iwabuchi, Tetsuji Takahashi, and Kuniyuki Hatori. Transport of actin-decorated liposomes along myosin molecules in vitro. *Biochemical and Biophysical Research Communications*, 422(1):164–168, 2012.

[53] Haiyang Jia, Michael Heymann, Frank Bernhard, Petra Schwille, and Lei Kai. Cell-free protein synthesis in micro compartments: building a minimal cell from biobricks. *New Biotechnology*, 2017.

[54] Hongyuan Jiang and Sean X Sun. Cellular pressure and volume regulation and implications for cell mechanics. *Biophysical journal*, 105(3):609–19, aug 2013.

[55] Koki Kamiya, Ryuji Kawano, Toshihisa Osaki, Kazunari Akiyoshi, and Shoji Takeuchi. Cell-sized asymmetric lipid vesicles facilitate the investigation of asymmetric membranes. *Nature Chemistry*, 8(9):881–889, 2016.

[56] F. C. Keber, E. Loiseau, T. Sanchez, S. J. DeCamp, L. Giomi, M. J. Bowick, M. C. Marchetti, Z. Dogic, and a. R. Bausch. Topology and dynamics of active nematic vesicles. *Science*, 345(6201):1135–1139, sep 2014.

[57] Felix C Keber, Etienne Loiseau, Tim Sanchez, Stephen J DeCamp, Luca Giomi, Mark J Bowick, M Cristina Marchetti, Zvonimir Dogic, and Andreas R Bausch. Topology and dynamics of active nematic vesicles. *Science (New York, N.Y.)*, 1135, 2014.

[58] Silke R. Kirchner, Alexander Ohlinger, Tom Pfeiffer, Alexander S. Urban, Fernando D. Stefani, Andras Deak, Andrey A. Lutich, and Jochen Feldmann. Membrane composition of jetted lipid vesicles: A Raman spectroscopy study. *Journal of Biophotonics*, 5(1):40–46, 2012.

- [59] Gijsje H Koenderink, Zvonimir Dogic, Fumihiko Nakamura, Poul M Bendix, Frederick C MacKintosh, John H Hartwig, Thomas P Stossel, and David a Weitz. An active biopolymer network controlled by molecular motors. *Proceedings of the National Academy of Sciences of the United States of America*, 106(36):15192–7, sep 2009.
- [60] Michael P Koonce, Judy Tong, Ursula Euteneuer, and Manfred Schliwa. Active sliding between cytoplasmic microtubules. *Nature*, 328(6132):737–739, 1987.
- [61] Darius Vasco Köster, Kabir Husain, Elda Iljazi, Abrar Bhat, Peter Biel-ing, R. Dyche Mullins, Madan Rao, and Satyajit Mayor. Actomyosin dynamics drive local membrane component organization in an in vitro active composite layer. *Proceedings of the National Academy of Sciences*, 113(12):E1645–E1654, 2016.
- [62] Laurent Kreplak, Harald Herrmann, and Ueli Aebi. Tensile properties of single desmin intermediate filaments. *Biophysical journal*, 94(7):2790–2799, 2008.
- [63] D. Kuchnir Fygenson, M. Elbaum, B. Shraiman, and A. Libchaber. Microtubules and vesicles under controlled tension. *Physical Review E*, 55(1):850–859, 1997.
- [64] Liedewij Laan, Nenad Pavin, Julien Husson, Guillaume Romet-Lemonne, Martijn Van Duijn, Magdalena Preciado López, Ronald D. Vale, Frank Jülicher, Samara L. Reck-Peterson, and Marileen Dogterom. Cortical dynein controls microtubule dynamics to generate pulling forces that position microtubule asters. *Cell*, 148(3):502–514, 2012.
- [65] Oscar M. Lancaster and Buzz Baum. Shaping up to divide: Coordinating actin and microtubule cytoskeletal remodelling during mitosis. *Seminars in Cell and Developmental Biology*, 34:109–115, 2014.
- [66] Cécile Leduc and Sandrine Etienne-Manneville. Regulation of microtubule-associated motors drives intermediate filament network polarization. *J Cell Biol*, 216(6):1689–1703, 2017.
- [67] Qingchuan Li, Xuejing Wang, Shenghua Ma, Ying Zhang, and Xiaojun Han. Electroformation of giant unilamellar vesicles in saline solution. *Colloids and Surfaces B: Biointerfaces*, 147:368–375, 2016.
- [68] Thomas H. Li, Jeanne C. Stachowiak, and Daniel a. Fletcher. *Mixing Solutions in Inkjet Formed Vesicles*, volume 465. Elsevier Inc., 1 edition, 2009.
- [69] O. Lieleg, M. M a E Claessens, Y. Luan, and a. R. Bausch. Transient binding and dissipation in cross-linked actin networks. *Physical Review Letters*, 101(10):1–4, 2008.

[70] Laurent Limozin, Alexander Roth, and Erich Sackmann. Microviscoelastic Moduli of Biomimetic Cell Envelopes. *Physical Review Letters*, 95(17):178101, oct 2005.

[71] Rafael B. Lira, Rumiana Dimova, and Karin A. Riske. Giant unilamellar vesicles formed by hybrid films of agarose and lipids display altered mechanical properties. *Biophysical Journal*, 107(7):1609–1619, 2014.

[72] M J Lohka and Y Masui. Formation in vitro of sperm pronuclei and mitotic chromosomes induced by amphibian ooplasmic components. *Science (New York, N.Y.)*, 220(4598):719–721, 1983.

[73] Etienne Loiseau, Jochen A M Schneider, Felix C Keber, Carina Pelzl, Gladys Massiera, Guillaume Salbreux, and Andreas R Bausch. Shape remodeling and blebbing of active cytoskeletal vesicles. *Science Advances*, 2(4):e1500465, 2016.

[74] Néstor López Mora, Jesper S. Hansen, Yue Gao, Andrew A. Ronald, Roxanne Kiełtyka, Noah Malmstadt, and Alexander Kros. Preparation of size tunable giant vesicles from cross-linked dextran(ethylene glycol) hydrogels. *Chemical Communications*, 50(16):1953, 2014.

[75] Tianzhi Luo, Krithika Mohan, Pablo a Iglesias, and Douglas N Robinson. Molecular mechanisms of cellular mechanosensing. *Nature materials*, 12(11):1064–71, nov 2013.

[76] Tianzhi Luo, Vasudha Srivastava, Yixin Ren, and Douglas N Robinson. Mimicking the mechanical properties of the cell cortex by the self-assembly of an actin cortex in vesicles. *Applied physics letters*, 104(15):153701, apr 2014.

[77] Sandro Matosevic. Stepwise Synthesis of Giant Unilamellar Vesicles on a Microfluidic Supporting Information. *Journal of the American Chemical Society*, pages 1–9, 2011.

[78] Stuart McLaughlin and Diana Murray. Plasma membrane phosphoinositide organization by protein electrostatics. *Nature*, 438(7068):605–11, dec 2005.

[79] Harvey T McMahon and Jennifer L Gallop. Membrane curvature and mechanisms of dynamic cell membrane remodelling. *Nature*, 438(7068):590–6, dec 2005.

[80] Makito Miyazaki, Masataka Chiba, Hiroki Eguchi, Takashi Ohki, and Shin'ichi Ishiwata. Cell-sized spherical confinement induces the spontaneous formation of contractile actomyosin rings in vitro. *Nature Cell Biology*, (February), 2015.

- [81] Michael Murrell, Patrick W. Oakes, Martin Lenz, and Margaret L. Gardel. Forcing cells into shape: the mechanics of actomyosin contractility. *Nature Reviews Molecular Cell Biology*, (July), 2015.
- [82] Giovanni Murtas. Artificial assembly of a minimal cell. *Molecular BioSystems*, 5(11):1292–1297, 2009.
- [83] Yukinori Nishigami, Hiroaki Ito, Seiji Sonobe, and Masatoshi Ichikawa. Non-periodic oscillatory deformation of an actomyosin microdroplet encapsulated within a lipid interface. *Scientific Reports*, 6(1):18964, 2016.
- [84] Ivar Noordstra, Qingyang Liu, Wilco Nijenhuis, Shasha Hua, Kai Jiang, Matthijs Baars, Sanne Remmelzwaal, Maud Martin, Lukas C. Kapitein, and Anna Akhmanova. Control of apico-basal epithelial polarity by the microtubule minus-end-binding protein CAMSAP3 and spectraplakins ACF7. *Journal of Cell Science*, 129(22):4278–4288, 2016.
- [85] M Bishr Omary, Nam-On Ku, Guo-Zhong Tao, Diana M Toivola, and Jian Liao. ‘heads and tails’ of intermediate filament phosphorylation: multiple sites and functional insights. *Trends in biochemical sciences*, 31(7):383–394, 2006.
- [86] Masaki Osawa, David E Anderson, and Harold P Erickson. Reconstitution of contractile FtsZ rings in liposomes. *Science (New York, N.Y.)*, 320(5877):792–4, may 2008.
- [87] Masaki Osawa and Harold P Erickson. Liposome division by a simple bacterial division machinery. *Proceedings of the National Academy of Sciences of the United States of America*, 110(27):11000–4, 2013.
- [88] Sadao Ota, Satoko Yoshizawa, and Shoji Takeuchi. Microfluidic formation of monodisperse, cell-sized, and unilamellar vesicles. *Angewandte Chemie (International ed. in English)*, 48(35):6533–7, jan 2009.
- [89] S. Pautot, B. J. Frisken, and D. A. Weitz. Engineering asymmetric vesicles. *Proceedings of the National Academy of Sciences*, 100(19):10718–10721, 2003.
- [90] Sophie Pautot, Barbara J Frisken, and D A Weitz. Production of Unilamellar Vesicles Using an Inverted Emulsion. *Langmuir*, (10):2870–2879, 2003.
- [91] Justin Peruzzi, M. Gertrude Gutierrez, Kylee Mansfield, and Noah Malmstadt. Dynamics of Hydrogel-Assisted Giant Unilamellar Vesicle Formation from Unsaturated Lipid Systems. *Langmuir*, 32(48):12702–12709, 2016.
- [92] Frédéric Pincet and Julien Husson. The solution to the streptavidin-biotin paradox: the influence of history on the strength of single molecular bonds. *Biophysical journal*, 89(6):4374–4381, 2005.

[93] Mathieu Pinot, Villier Steiner, Benoit Dehapiot, Byung-Kuk Yoo, Franck Chesnel, Laurent Blanchoin, Charles Kervrann, and Zoher Gueroui. Confinement induces actin flow in a meiotic cytoplasm. *Proceedings of the National Academy of Sciences of the United States of America*, 109(29):11705–10, jul 2012.

[94] Léa-Laetitia Pontani, Jasper van der Gucht, Guillaume Salbreux, Julien Heuvingh, Jean-François Joanny, and Cécile Sykes. Reconstitution of an actin cortex inside a liposome. *Biophysical journal*, 96(1):192–8, jan 2009.

[95] Magdalena Preciado Lopez, Florian Huber, Ilya Grigoriev, Michel O. Steinmetz, Anna Akhmanova, Gijsje H. Koenderink, and Marileen Dogterom. Actin-microtubule coordination at growing microtubule ends. *Nature communications*, 5:4778, 2014.

[96] Roy A Quinlan, Nicole Schwarz, Reinhard Windoffer, Christine Richardson, Tim Hawkins, Joshua A Broussard, Kathleen J Green, and Rudolf E Leube. A rim-and-spoke hypothesis to explain the biomechanical roles for cytoplasmic intermediate filament networks. *J Cell Sci*, 130(20):3437–3445, 2017.

[97] David L Richmond, Eva M Schmid, Sascha Martens, Jeanne C Stachowiak, Nicole Liska, and Daniel a Fletcher. Forming giant vesicles with controlled membrane composition, asymmetry, and contents. *Proceedings of the National Academy of Sciences of the United States of America*, 108(23):9431–6, jun 2011.

[98] Germán Rivas, Sven K. Vogel, and Petra Schwille. Reconstitution of cytoskeletal protein assemblies for large-scale membrane transformation. *Current Opinion in Chemical Biology*, 22:18–26, 2014.

[99] Rita Sachse, Srujan K Dondapati, Susanne F Fenz, Thomas Schmidt, and Stefan Kubick. Membrane protein synthesis in cell-free systems: from bio-mimetic systems to bio-membranes. *FEBS letters*, 588(17):2774–2781, 2014.

[100] Tim Sanchez, Daniel T N Chen, Stephen J DeCamp, Michael Heymann, and Zvonimir Dogic. Spontaneous motion in hierarchically assembled active matter. *Nature*, 491(7424):431–4, nov 2012.

[101] Brian M. Paegel Sandro Matosevic. Layer-by-layer cell membrane assembly. *Nature Chemistry*, 5:958–963, 2013.

[102] Yusuke Sato, Yuichi Hiratsuka, Ibuki Kawamata, Satoshi Murata, and Shin-ichiro M. Nomura. Micrometer-sized molecular robot changes its shape in response to signal molecules. *Science Robotics*, 2(4):eaal3735, 2017.

- [103] Edith Schäfer, Torben Tobias Kliesch, and Andreas Janshoff. Mechanical properties of giant liposomes compressed between two parallel plates: Impact of artificial actin shells. *Langmuir*, 29(33):10463–10474, 2013.
- [104] Edith Schäfer, Marian Vache, Torben-Tobias Kliesch, and Andreas Janshoff. Mechanical response of adherent giant liposomes to indentation with a conical AFM-tip. *Soft Matter*, 11(22):4487–4495, 2015.
- [105] Christine Schmitt, Anna H Lippert, Navid Bonakdar, Vahid Sandoghdar, and Lars M Voll. Compartmentalization and transport in synthetic vesicles. *Frontiers in bioengineering and biotechnology*, 4, 2016.
- [106] Jakub Sedzinski, Maté Biro, Annelie Oswald, Jean Yves Tinevez, Guillaume Salbreux, and Ewa Paluch. Polar actomyosin contractility destabilizes the position of the cytokinetic furrow. *Nature*, 476(7361):462–468, 2011.
- [107] Fenz S.F., Merkel R., and Sengupta K. Diffusion and Intermembrane Distance: Case Study of Avidin and E-Cadherin Mediated Adhesion. *Langmuir*, 25(17):1074–1085, 2009.
- [108] Marta N. Shahbazi, Diego Megias, Carolina Epifano, Anna Akhmanova, Gregg G. Gundersen, Elaine Fuchs, and Mirna Perez-Moreno. CLASP2 interacts with p120-catenin and governs microtubule dynamics at adherens junctions. *Journal of Cell Biology*, 203(6):1043–1061, 2013.
- [109] Roie Shlomovitz and Nir S Gov. Physical model of contractile ring initiation in dividing cells. *Biophysical journal*, 94(4):1155–68, feb 2008.
- [110] Jeanne C Stachowiak, David L Richmond, Thomas H Li, Allen P Liu, Sapun H Parekh, and Daniel a Fletcher. Unilamellar vesicle formation and encapsulation by microfluidic jetting. *Proceedings of the National Academy of Sciences of the United States of America*, 105(12):4697–4702, 2008.
- [111] Pasquale Stano, Paolo Carrara, Yutetsu Kuruma, Tereza Pereira de Souza, and Pier Luigi Luisi. Compartmentalized reactions as a case of soft-matter biotechnology: synthesis of proteins and nucleic acids inside lipid vesicles. *Journal of Materials Chemistry*, 21(47):18887–18902, 2011.
- [112] Hannah Stein, Susann Spindler, Navid Bonakdar, Chun Wang, and Vahid Sandoghdar. Production of isolated giant unilamellar vesicles under high salt concentrations. *Frontiers in Physiology*, 8(FEB):1–16, 2017.
- [113] Shia-Yen Teh, Ruba Khnouf, Hugh Fan, and Abraham P Lee. Stable, biocompatible lipid vesicle generation by solvent extraction-based droplet microfluidics. *Biomicrofluidics*, 5(4):44113–4411312, dec 2011.

- [114] Jean-Yves Tinevez, Ulrike Schulze, Guillaume Salbreux, Julia Roensch, Jean-François Joanny, and Ewa Paluch. Role of cortical tension in bleb growth. *Proceedings of the National Academy of Sciences of the United States of America*, 106(44):18581–6, nov 2009.
- [115] Feng-Ching Tsai and Gijsje Hendrika Koenderink. Shape control of lipid bilayer membranes by confined actin bundles. *Soft Matter*, 11(45):8834–8847, 2015.
- [116] Feng-ching Tsai, Sophie Roth, Marileen Dogterom, Gijsje Hendrika, Feng-ching Tsai, and Gijsje Hendrika Koenderink. *Biomimetic Liposome Model Systems to Study Cell Shape Control by the Cytoskeleton*, volume 19. Elsevier Inc., 1 edition, 2014.
- [117] Feng Ching Tsai, Björn Stuhmann, and Gijsje H. Koenderink. Encapsulation of active cytoskeletal protein networks in cell-sized liposomes. *Langmuir*, 27(16):10061–10071, 2011.
- [118] Jasper van der Gucht, Ewa Paluch, Julie Plastino, and Cécile Sykes. Stress release drives symmetry breaking for actin-based movement. *Proceedings of the National Academy of Sciences*, 102(22):7847–7852, 2005.
- [119] Dirk van Swaay and Andrew DeMello. Microfluidic methods for forming liposomes. *Lab on a Chip*, 13(5):752, 2013.
- [120] Alexander B. Verkhovsky, Tatyana M. Svitkina, and Gary G. Borisy. Self-polarization and directional motility of cytoplasm. *Current Biology*, 9(1):11–20, 1999.
- [121] Mathijs Vleugel, Sophie Roth, Celebrity F Groenendijk, and Marileen Dogterom. Reconstitution of basic mitotic spindles in spherical emulsion droplets. *JoVE (Journal of Visualized Experiments)*, (114):e54278–e54278, 2016.
- [122] Sven K. Vogel, Fabian Heinemann, Grzegorz Chwastek, and Petra Schwille. The design of MACs (minimal actin cortices). *Cytoskeleton*, 70(11):706–717, 2013.
- [123] Peter Walde, Katia Cosentino, Helen Engel, and Pasquale Stano. Giant vesicles: preparations and applications. *Chembiochem : a European journal of chemical biology*, 11(7):848–65, may 2010.
- [124] Andreas Weinberger, Feng-Ching Tsai, Gijsje H Koenderink, Thais F Schmidt, Rosângela Itri, Wolfgang Meier, Tatiana Schmatko, André Schröder, and Carlos Marques. Gel-assisted formation of giant unilamellar vesicles. *Biophysical journal*, 105(1):154–64, jul 2013.
- [125] Marian Weiss, Johannes Patrick Frohnmayr, Lucia Theresa Benk, Barbara Haller, Thomas Heitkamp, Michael Börsch, Rumiana Dimova, and Kai Sundmacher. Sequential Bottom-up Assembly of Synthetic Cells. *Nature Materials*, (October), 2017.

- [126] Michael Winding, Michael T. Kelliher, Wen Lu, Jill Wildonger, and Vladimir I. Gelfand. Role of kinesin-1-based microtubule sliding in *Drosophila* nervous system development. *Proceedings of the National Academy of Sciences*, 113(34):E4985–E4994, 2016.
- [127] Martin Wühr, Robert M. Freeman, Marc Presler, Marko E. Horb, Leonid Peshkin, Steven P. Gygi, and Marc W. Kirschner. Deep proteomics of the *xenopus laevis* egg using an mRNA-derived reference database. *Current Biology*, 24(13):1467–1475, 2014.
- [128] Norman Y. Yao, Chase P. Broedersz, Martin Depken, Daniel J. Becker, Martin R. Pollak, Frederick C. MacKintosh, and David a. Weitz. Stress-Enhanced Gelation: A Dynamic Nonlinearity of Elasticity. *Physical Review Letters*, 110(January):1–5, 2013.

Supplementary Information

Method	Requirements	Oil-free	Encapsulation	GUV size	Membrane asymmetry
Gel-assisted swelling [49, 117, 124, 74, 91]	-	+	Size-dependent [124]	10 – 80 $\mu m \pm 25\%$ [74]	-
Inverse Emulsion [90, 80]	Centrifuge	- [17]	100%	20 $\mu m \pm 25\%$ [90]	+ [89]
On-chip inverse emulsion [88, 77, 101]	Microfluidics	Unknown	100%	25 – 60 $\mu m \pm 0.5 \mu m$ [77]	+ [77, 101]
cDICE [11, 2]	Spin coater, pipette puller	Unknown	100%	8 – 40 $\mu m \pm 10\%$ [2]	-
DED + Solvent Removal [113, 29, 30, 32, 81]	Microfluidics	Unknown	100%	5 – 20 $\mu m \pm 0.5 \mu m$ [32]	-
Jetting [110, 97, 58, 55]	Inkjet	- [55]	80% [68]	+ [110, 97, 58]	+ [97]
Jetting with break-up [55]	Inkjet -	+ [55]	Unknown	4 – 12 $\mu m \pm 30\%$	+ [55]
Droplet-stabilized GUV [125]	Microfluidics	+ [125]	Unknown	Unknown	-

Table 1: Comparison of techniques to create GUVs. Requirements beyond standard lab equipment (pipettes etc.) are specified per technique. The column oil-free refers to whether the membrane contains oil defects. The column 'Encapsulation' specifies the efficiency at which proteins can be encapsulated, for gel-assisted swelling this depends on the weight of the protein. The column 'GUV size' specifies both the range with which the average size can be tuned, and an indication of the polydispersity. Membrane asymmetry specifies whether the membrane composition of the inner and outer leaflet can be independently tuned.

Ref	Method/type	Actin	Microtubules	Cross linkers	Motors	Extract	Mechanics	Shape control
[115]	Gel-assisted swelling	x		x				Protrusions
[46]	Swelling + IE		x					Protrusions
[20]	Gel-assisted swelling	x		x	x			Collapse
[73]	cDICE	x		x	x			Blebs
[3]	Droplet					x		Egg-shape
[51, 83]	Droplet					x		Wrinkling
[56]	cDICE		x		x			Protrusions
[102]	IE		x		x			Amoeba-like
[17]	IE	x		x			Tether	
[45]	IE	x		x			Tether	
[76]	IE	x		x			Micropipette	
[104]	EF	x					AFM	
[103]	EF	x					AFM	
[70]	EF	x					Microrheology	

Table 2: Overview of papers from the last five years that encapsulate purified cytoskeletal proteins or cellular extracts in GUVs or droplets.